

TOTAL ACREAGE IN CITY LIMITS - 8312.3 ac.
ALLOWABLE ANNEX AMOUNT - 30% - 2493.7 ac.

-  Cleveland Existing City Limits
-  North Cleveland City Limits
-  North Cleveland ETJ
-  Splendora City Limits
-  Splendora ETJ
-  Cleveland Existing ETJ

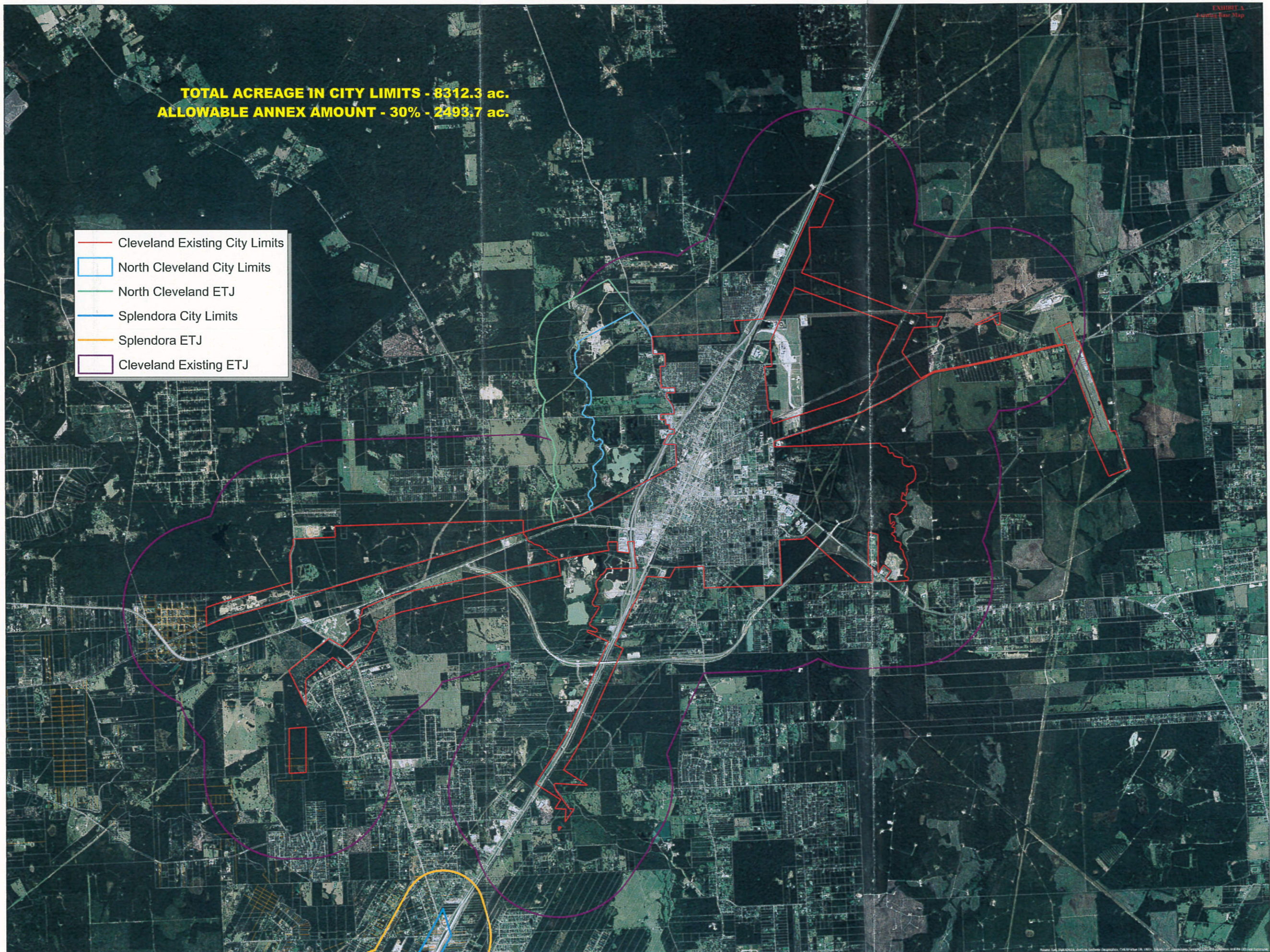







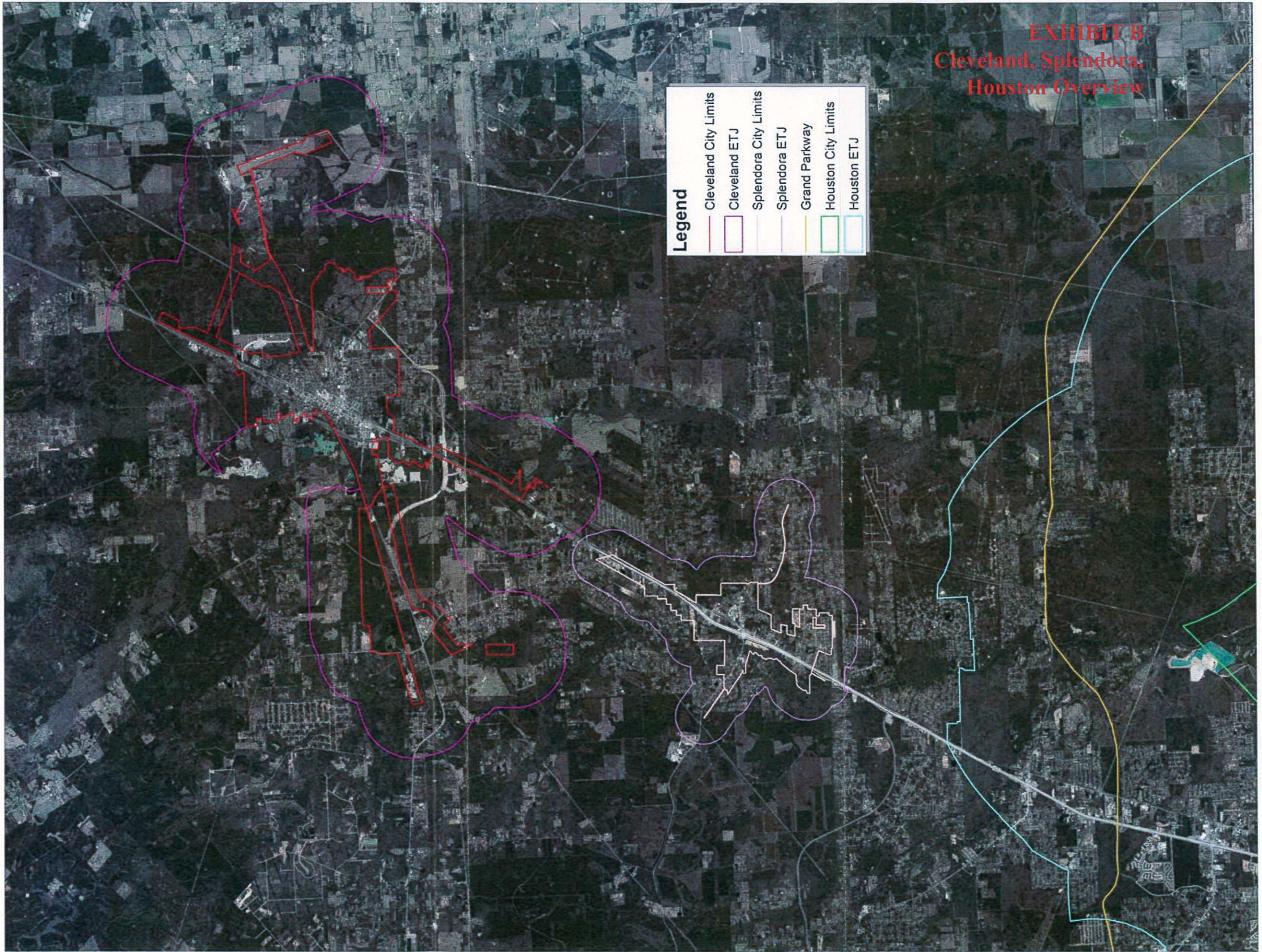


EXHIBIT B
Cleveland, Splendora,
Houston Overview








| Legend | |
|---|-----------------------|
|  | Cleveland City Limits |
|  | Cleveland ETJ |
|  | Splendora City Limits |
|  | Splendora ETJ |
|  | Grand Parkway |
|  | Houston City Limits |
|  | Houston ETJ |

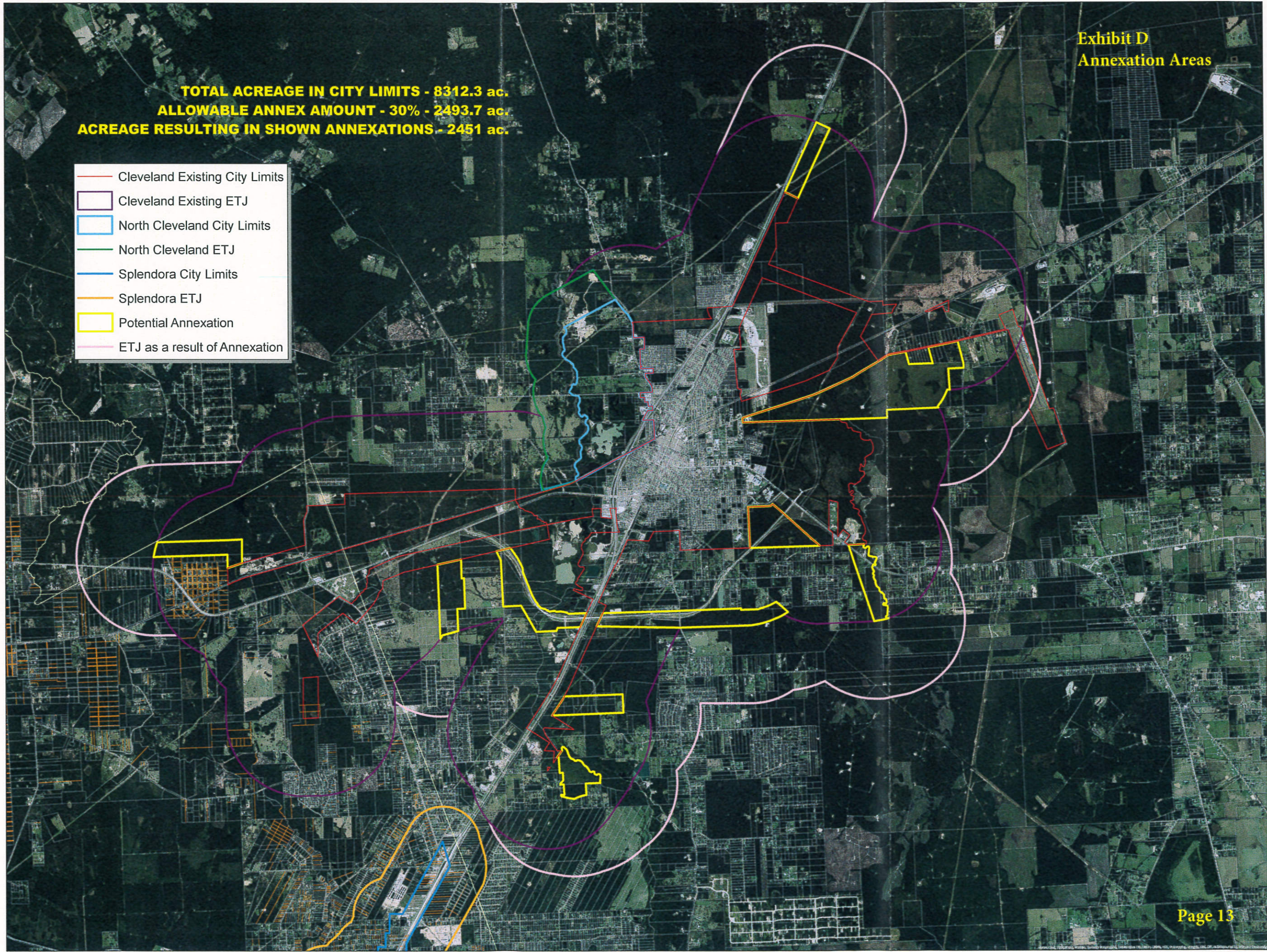




**Proposed Industrial
Development Area**









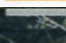
TOTAL ACREAGE IN CITY LIMITS - 8312.3 ac.
ALLOWABLE ANNEX AMOUNT - 30% - 2493.7 ac.
ACREAGE RESULTING IN SHOWN ANNEXATIONS - 2451 ac.

-  Cleveland Existing City Limits
-  Cleveland Existing ETJ
-  North Cleveland City Limits
-  North Cleveland ETJ
-  Splendora City Limits
-  Potential Annexation
-  ETJ as a result of Annexation



**Exhibit E
Annexation Areas
and PILOT Areas**

**TOTAL ACREAGE IN CITY LIMITS - 8312.3 ac.
ALLOWABLE ANNEX AMOUNT - 30% - 2493.7 ac.
ACREAGE RESULTING IN SHOWN ANNEXATIONS - 2451 ac.**

-  Cleveland Existing City Limits
-  Splendor City Limits
-  Splendor ETJ
-  North Cleveland City Limits
-  North Cleveland ETJ
-  Potential Annexation
-  Cleveland Existing ETJ
-  ETJ as a result of Annexation
-  P.I.L.O.T. Areas

