



CLEVELAND

STRATEGIC PARKS PLAN
A Parks and Recreation Study for City of Cleveland, TX



IN ASSOCIATION WITH

CITY OF CLEVELAND

Mayor - Danny Lee
Scott Swigert, City Manager

Council Position 1 - Julius Buckley
Council Position 2 - Roscoe Warrick Jr
Council Position 3 - Brent McWaters
Council Position 4 - Desirée David
Council Position 5 - Rachel Hall

Parks and Recreation Committee

Julius Buckley
Marilyn Clay
Willie Carter
Ivan Williams
Alyssa Hollie
Regina Vollmer
Desiree David
Cynthia Carevic
Maria Droddy

City Staff

Mary Cohn, Memorial Library
Roger Brookes, Director of Public Works
Emilio Lavario, Director of Community Development
Danielle Lewis, Development Services & Planning Manager
Ashleigh Broussard, Tourism and Marketing Director


BURDITT CONSULTANTS, LLC.


Charles Burditt, Managing Principal
Claudia T. Walker, RLA, Project Manager
Paul Howard, Project Manager
Scott Perry, Director of Recreation Planning
Phillip Kelley, Landscape Designer
Reiss Pleasant, Landscape Designer




The Cleveland Parks System Has:

1,822
Residents Per Park 

14.03
Acres of parkland per 1,000 residents 

5.0
Full-time equivalent employees per 10,000 residents 

\$75.43
Operating expenditures per capita 



01
INTRODUCTION

STRATEGIC FRAMEWORK
Vision and Mission
Goals and Objectives

02
INVENTORY AND ANALYSIS

COMMUNITY PROFILE
EXISTING PARKS INVENTORY
RECREATION BY OTHERS
10 MINUTE WALK ANALYSIS

03
LOCAL DEMAND

PARKS AND RECREATION SURVEY

04
RECOMMENDATIONS

RECOMMENDATIONS FOR PARK IMPROVEMENTS

05
IMPLEMENTATION

FUNDING OPPORTUNITIES



01

INTRODUCTION

Strategic Plan Framework

Strategic Plan Framework

Creating a strategic parks plan for the city of Cleveland, Texas involves developing a comprehensive vision for enhancing the city's green spaces, recreational facilities, and community engagement. The following is the framework for the Strategic Parks Plan for Cleveland:

1. Vision and Mission Statement

- Vision: To create a network of safe, accessible, and vibrant parks and green spaces that promote health, wellness, community engagement, and environmental stewardship in Cleveland, Texas.
- Mission: To enhance the quality of life for all residents by developing, maintaining, and promoting a diverse range of parks, recreational facilities, and programs that meet the needs of the community.

2. Goals and Objectives

1. Enhance Park Accessibility and Connectivity
 - Improve pedestrian and bicycle access to parks.
 - Develop a network of trails connecting parks, neighborhoods, and key community destinations.
 - Ensure all parks comply with the Americans with Disabilities Act (ADA) standards
2. Upgrade and Maintain Park Facilities
 - Conduct regular assessments of park facilities and prioritize upgrades to aging infrastructure.
 - Develop a maintenance schedule to ensure parks are clean, safe, and well-maintained.
 - Invest in new facilities such as playgrounds, sports fields, and community gardens.
3. Promote Community Engagement and Participation
 - Organize community events, such as festivals, farmers' markets, and outdoor fitness classes, to increase park usage.
 - Launch public awareness campaigns to promote park activities and programs.
 - Engage residents on a routine basis through surveys, social media, and other outlets to gather feedback on residents' needs for services, programs, and facilities.
4. Expand Recreational Opportunities for All Ages and Abilities
 - Develop programs and amenities catering to diverse age groups, including children, youth, adults, and seniors.
 - Expand partnerships with local schools, non-profits, and businesses to offer more recreational programs.
 - Introduce fitness zones, multipurpose sports courts, and spaces for cultural activities.
5. Ensure Environmental Sustainability
 - Implement sustainable practices, such as water conservation and native plant landscaping.
 - Develop and maintain green infrastructure, such as rain gardens and permeable pathways, to manage stormwater.
 - Create educational programs focused on local ecology and conservation.



3. Park Inventory and Assessment

- Conduct a Comprehensive Inventory: Assess all existing parks and recreational facilities in Cleveland, documenting their condition, amenities, and needs.
- Evaluate Park Distribution: Analyze the distribution of parks across the city to identify under-served areas. Use GIS mapping to determine gaps in service and prioritize new park developments.

4. Strategic Actions

1. Develop New Parks and Improve Existing Ones
 - Identify suitable locations for new parks, especially in underserved neighborhoods.
 - Improve existing parks to increase amenities and recreational opportunities.
2. Improve Safety and Security
 - Enhance park lighting, signage, and surveillance systems to improve safety.
 - Address ADA accessibility issues within existing parks.
3. Implement a Marketing and Outreach Strategy
 - Use social media, local media, and community events to raise awareness of park programs and facilities.
4. Secure Funding and Resources
 - Explore diverse funding sources, including grants, private donations, sponsorships, and public-private partnerships.
5. Develop a Master Plan for Future Park Development
 - Create a detailed master plan outlining future park developments, expansions, and improvements over the next 5-10 years.
 - Include timelines, budget estimates, and potential funding sources.

5. Community Involvement and Feedback

- Conduct surveys, focus groups, and public meetings to gather input from residents about their needs and preferences.
- Establish a feedback mechanism, such as an online portal or suggestion box, to continuously collect community input.

6. Implementation Timeline

- Short-Term (1-2 years): Improve existing park facilities, develop partnerships, increase community engagement, secure initial funding.
- Mid-Term (3-5 years): Expand parks and amenities, enhance connectivity.
- Long-Term (6-10 years): Complete new park developments, achieve equitable park distribution, and maintain high community engagement levels.

7. Budget and Resource Allocation

- Allocate Budget: Develop a detailed budget plan, including estimated costs for park development, maintenance, staff, and programs.
- Identify Funding Sources: Leverage local, state, and federal grants, community fundraising, sponsorships, and bonds.

8. Partnerships and Collaboration

- Partner with local schools, businesses, non-profits, and government agencies to enhance resources, share costs, and increase community involvement.

9. Conclusion

The strategic parks plan for Cleveland, Texas seeks to transform the city's parks and open spaces into dynamic, inclusive, and sustainable environments that enhance community well-being, encourage active lifestyles, and support environmental stewardship. By leveraging collaborative efforts, targeted investments, and community involvement, Cleveland aspires to develop a vibrant parks system that will serve as a fundamental cornerstone of the community.



02

Inventory & Analysis

- Community Profile
- Existing Parks Inventory
- Recreation by Others
- 10- Minute Walk Analysis

Community Profile

Cleveland, situated in Liberty County, Texas, is a community with approximately 9,113 residents. It is located along the San Jacinto River and surrounded by pine and hardwood forests, a region historically significant for its timber industry.

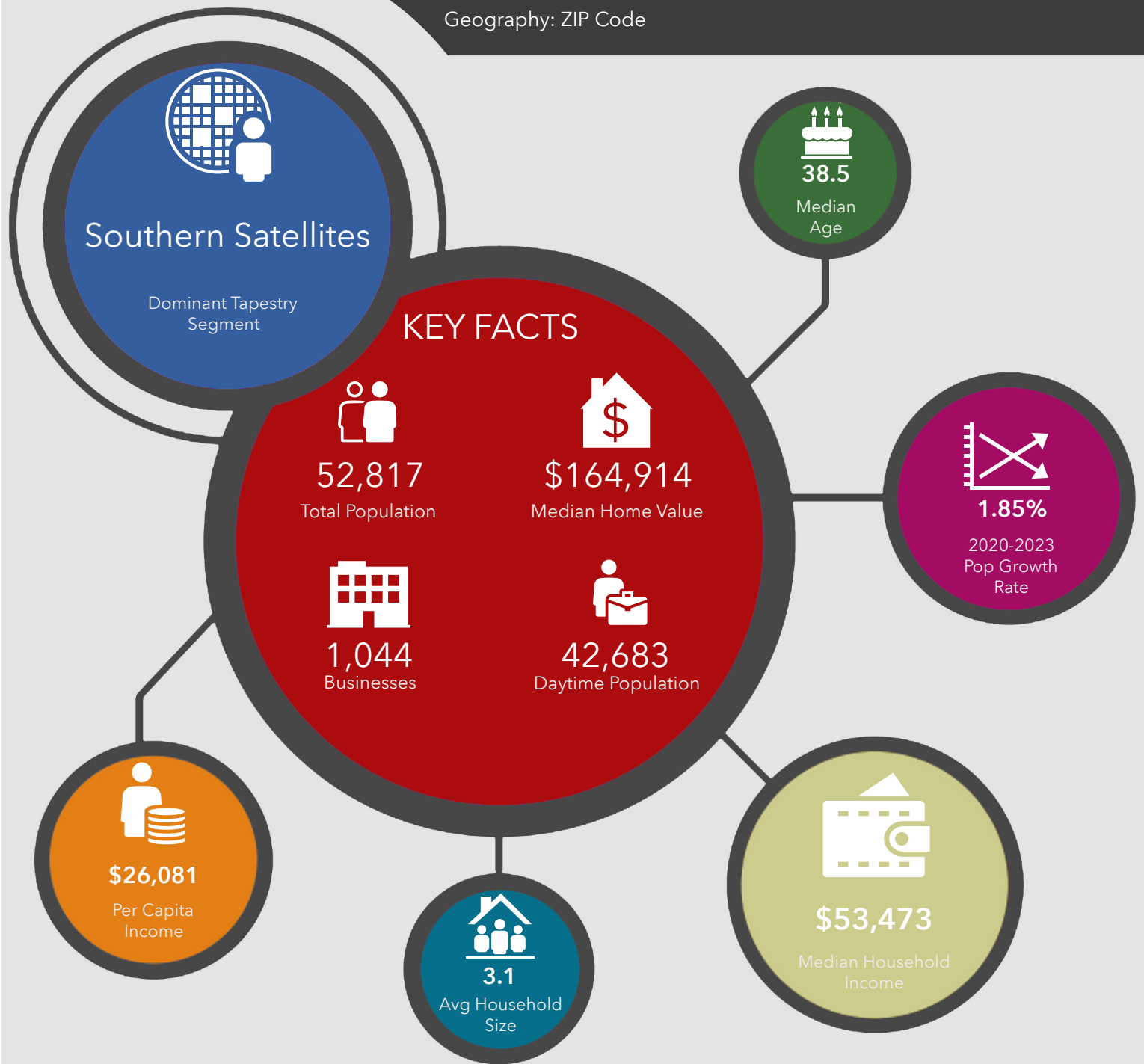
Presently, Cleveland is experiencing growth while maintaining its small-town character and charm. The population increased by 22.1% between 2020 and 2023, with substantial growth occurring outside the city limits. This expansion necessitates enhanced parks and facilities, as well as additional parkland to accommodate the burgeoning demand.

New developments such as Grand Oaks Reserve and Pinewood Trails provide amenities to their residents, including parks, trails, splash pads, fitness centers, and even a golf course. These amenities complement the City's park system by alleviating pressure often associated with population growth. Nevertheless, as these facilities primarily serve residents within those communities, it remains essential for the City to continue addressing the needs of Cleveland's citizens, both in terms of accommodating growth and adapting to changing demands for specific features and amenities.

While the U.S. Census Bureau reports an approximate population of 9,113 residents within Cleveland, the service area encompasses a significantly larger figure. The Lone Star College System - North Houston Economic Development Center estimates that there are approximately 52,817 residents within the two zip codes surrounding Cleveland (77327 & 77328). With extensive development occurring on Cleveland's outskirts, the demand on City parks is notably increasing.

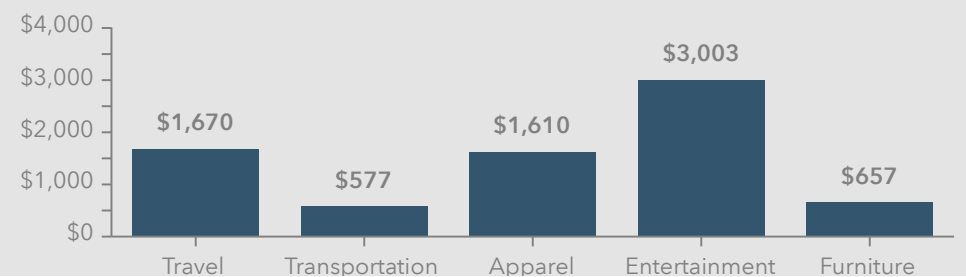


2 ZIP Codes
Geography: ZIP Code



The Lone Star College-System North Houston Economic Development Center conducted a demographic study of zip codes 77327 and 77328 around Cleveland. The results indicate that Cleveland's parks, businesses, schools, and churches serve a significantly larger population.

KEY SPENDING FACTS



Source: This information was provided by the...

Cleveland Parks and Recreation

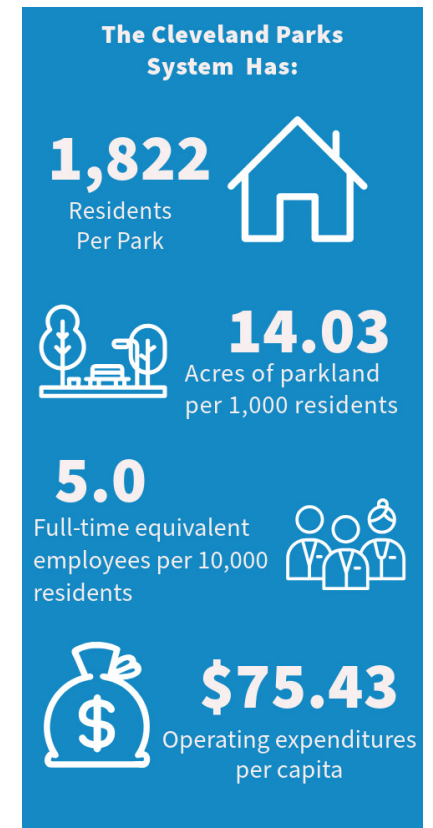
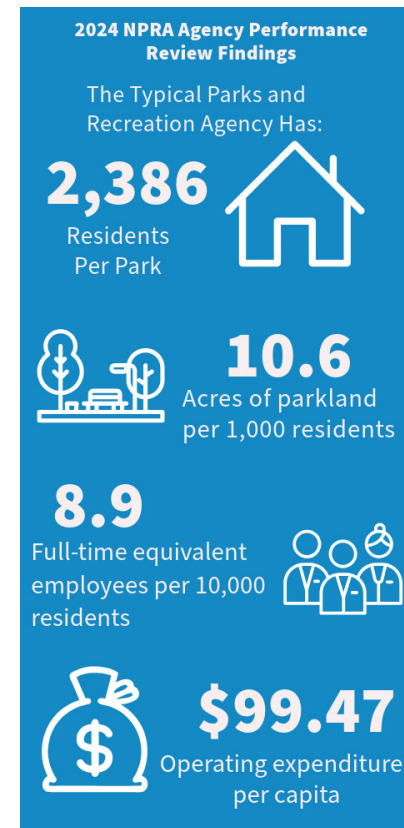
The City of Cleveland is responsible for the management and operation of five parks, which collectively cover 127.86 acres of parkland. These parks include:

- Old City Park
- Samuel Wiley Park
- Cleveland Municipal Sports Complex
- Stancil Park, Arena, and Expo
- Campbell Park

The Parks/Cemeteries Department is responsible for maintaining parks and other public properties owned by the City of Cleveland, including mowing 52 acres at the following locations:

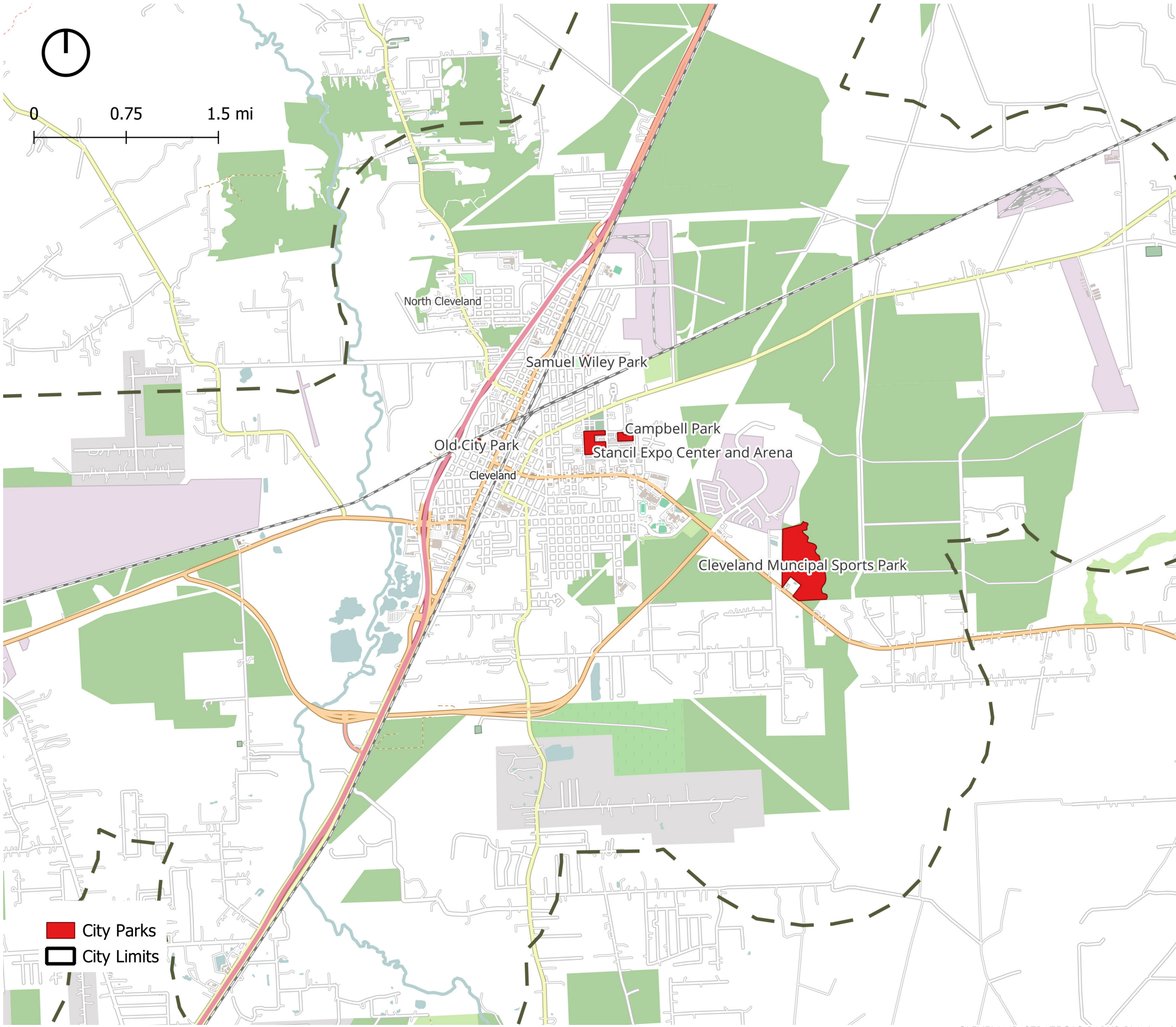
- 5 City Parks
- Cleveland Memorial Cemetery Properties
- Airport Runway Lights
- Cleveland Municipal Court
- Austin Memorial Library
- City Hall

The Parks/Cemeteries department is staffed by five full-time employees. Their responsibilities encompass mowing, maintaining 46 flower beds and flower pots throughout the community, conducting mosquito fogging, collecting trash, cleaning restrooms, and repairing equipment. Additionally, staff are tasked with setup for special events at Stancil Exposition, Samuel Wiley Park, the Airport, and for parades.



The 2024 NPRA Agency Performance Review presents benchmarks for parks and recreation agencies to evaluate their operations. Notably, Cleveland possesses an above-average amount of parkland per 1,000 residents but has fewer full-time staff per 10,000 residents compared to national averages.





Old City Park

Location:

320 Hubert St.
Cleveland, TX 77327

Features:

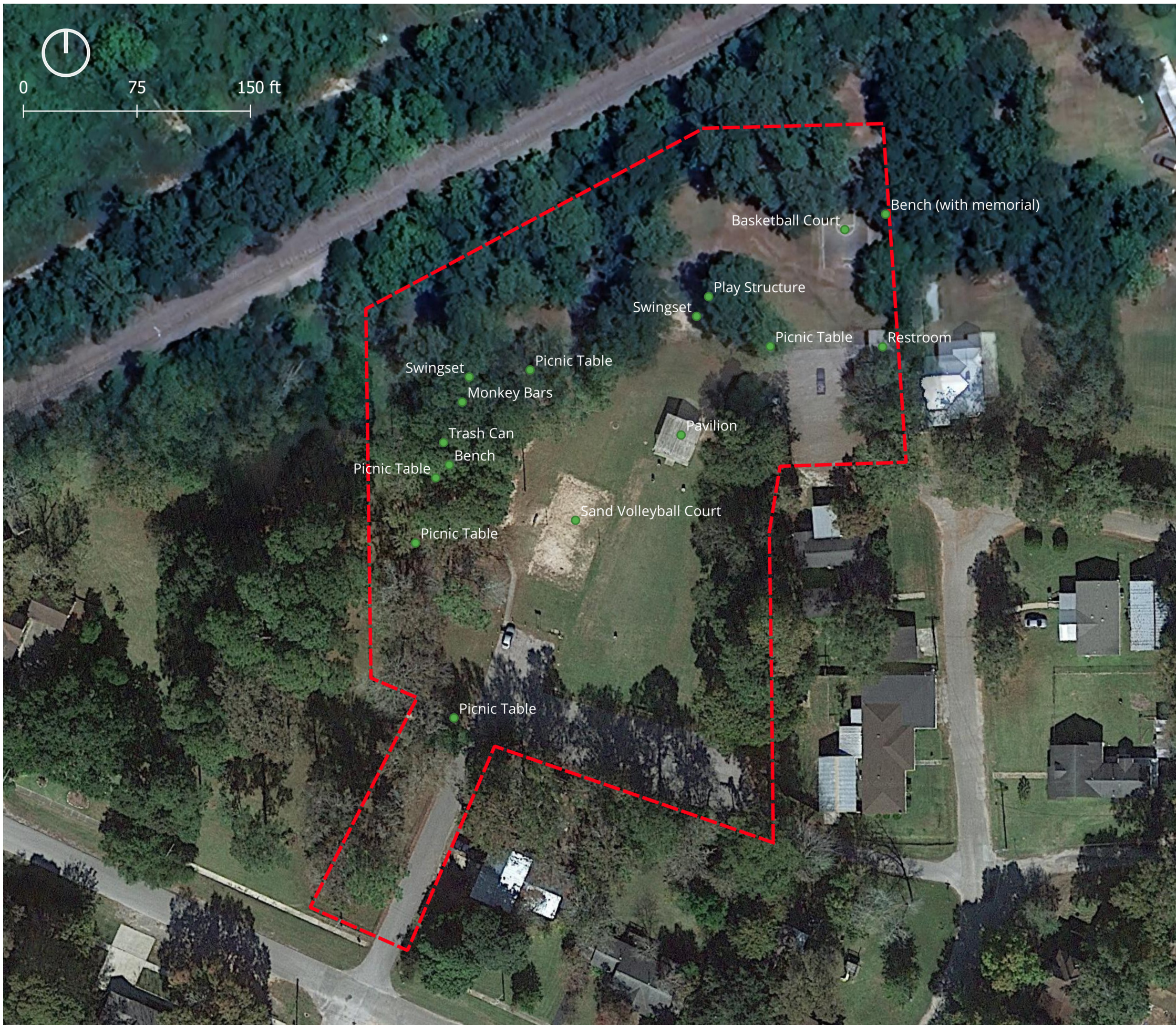
- Pavilion
- Rest rooms
- Picnic Shelters
- Picnic Tables
- Playground
- Sand Volleyball Court
- Basketball Court

Description:

Old City Park is a charming neighborhood park located on the east side of Cleveland. Encompassed by vibrant greenery, the park boasts an array of features including play structures for children to explore, picnic areas ideal for leisurely meals, a spacious pavilion perfect for gatherings, a basketball court, sand volleyball, and rest rooms.

The park has been a popular spot for picnics, family get-togethers, and birthday celebrations, for countless visitors over the years. Despite its popularity, some amenities have started showing their age. While the playground was replaced in 2024, ensuring it remains a safe and fun area for children to play, picnic tables and benches are due to be replaced to restore their inviting charm. The rest rooms, though functional, are also due for renovation or complete replacement to enhance comfort and cleanliness. The pavilion is in good general condition, providing reliable shelter for various events.





Samuel Wiley Park

Size:

4.56 acres

Location:

1030 Green St.
Cleveland, TX 77327

Features:

- Covered Basketball Court
- Group Pavilion
- Picnic Shelter
- Picnic Tables
- Playgrounds
- Restrooms
- Baseball Practice Field

Description:

Samuel Wiley Park, dedicated in 1976, has been a beloved recreational space for generations of Cleveland residents. The park offers a variety of amenities including a large group pavilion, a covered basketball court, picnic areas, playgrounds, restrooms and a baseball field. It is situated next to the Cleveland Memorial Cemetery and neighboring communities along Martin Luther King Drive.

The park is in fair condition, but several components are recommended for renovation or replacement. The restrooms, should be overhauled or replaced, as they are vital for the comfort of the group activities that take place at the pavilion. While the large pavilion itself is in good functional condition, it is in need of painting to address surface rust on the roof and framing.

The playground equipment throughout the park is quite old, with some pieces in poor condition. The same applies to the picnic tables and benches within the park, all of which should be scheduled for replacement.





- Picnic Shelter
- Picnic Table
- Grill
- Picnic Table
- Slide
- Swingset
- Bench
- Play Structure
- Grill
- Dugout
- Diamond Field (Practice)
- Bleachers
- Backstop
- Bleachers
- Dugout
- Bleachers
- Jungle Gym
- Swingset
- Group Pavilion
- Basketball Court (Covered)
- Ramp
- Restroom
- Bench
- Play Structure
- Play Structure

Campbell Park

Size:

4.696 acres

Location:

102 Campbell St.
Cleveland, TX 77327

Features:

- Basketball Court
- Playground
- Skate Park
- Restrooms
- Sand Volleyball Court
- Splash Pad
- Picnic Areas
- Walking Paths

Description:

Campbell Park serves as a community park with a variety of recreation features and amenities. Once the home of the municipal pool, the park now features a splash pad in its place. In October of 2024, the City acquired used skate park equipment from another municipality and installed the City's first skate park near the splash pad. The old pool house is still present on site along with the large parking lot that was once needed to accommodate pool visitors.

Among the attractions of Campbell Park are picnic areas, where families can enjoy leisurely meals in the open air, shaded by tall trees that provide a respite from the sun. The playground is equipped with swings, slides, and climbing structures, offering children a safe yet adventurous space to explore and play. Adjacent to the playground lies a sand volleyball court, inviting casual games. For those who prefer a more tranquil experience, the park boasts walking paths that meander through the park, perfect for a peaceful stroll.

At the front of the park, there is a significant expanse of open space, ideal for the future development of additional recreation features.





Cleveland Municipal Sports Park

Size:

100.883 acres

Location:

26350 SH 321

Cleveland, TX 77327

Features:

- 300' Diamond Fields (4)
- 150' Diamond Fields (2)
- 360' x 160' Football Field (1)
- Bleachers
- Concession Stand
- Restrooms
- Playgrounds
- Covered Dugouts

Description:

The Cleveland Municipal Sports Park is a 97-acre sports and community hub that officially opened in June 2014. The park currently includes six diamond fields designated for baseball and softball, covered dugouts, a regulation football field, seating bleachers, a concession stand for offering snacks and refreshments, lighting for evening games, modern restroom facilities, and a playground for children. These amenities are ideal for league play, youth sports, men's and women's softball tournaments, as well as practice sessions for various teams including select and league activities.

Presently, the park represents the initial phase of a comprehensive master plan aimed at expanding recreational opportunities with soccer fields, trails, picnic areas, and additional attractions. This plan intends to transform the park from a community asset into a regional destination that attracts thousands of visitors.





0 400 800 ft



Football Goal

Scoreboard

Bleachers

Bleachers

Diamond Field

Bleachers

Bleachers

Dugout

Dugout

Dugout

Dugout

Diamond Field

Diamond Field

Bleachers

Covered Bleachers

Dugout

Diamond Field

Scoreboard

Parking Lot

Diamond Field

Dugout

Covered Bleachers

Covered Bleachers

Dugout

Diamond Field

Stancil Park, Arena, and Expo

Size:

Approx. 7 acres

Location:

211 Peach St.
Cleveland Texas 77327

Features:

- Rodeo Arena
- Livestock Show Barn
- Concession
- Log Cabin
- Pavilions
- Restrooms

Description:

The Stancil Expo Center is a venue for community events, providing spaces for livestock shows, rodeos, outdoor picnics, and festivals. The site includes a rodeo arena, livestock show barn, concession stand, log cabin (indoor rental space), pavilions and restrooms. While the venue is operational and continues to serve the community, certain areas may require renovations to improve functionality and usability, assuming the intended use remains unchanged.

For example, the livestock show barn could be updated with enhanced infrastructure, better ventilation, and modern equipment to better accommodate events. The rodeo arena may benefit from new seating and accessibility improvements for spectators. Moreover, updating the pavilions with modern lighting and sound systems could enhance versatility for different events. Lastly, renovating the restrooms and parking facilities could aid in managing larger crowds and provide a more comfortable experience for visitors.

It is recommended that the City conduct a feasibility study to determine optimal use of this location for future benefit.





Recreation Provided by Others

The recreation ecosystem encompasses not only City-owned parks and facilities but also those of various other entities such as private gyms, fitness trainers, school facilities, martial arts instructors, private sports leagues, and shooting ranges. These providers enhance the City's parks and services by offering additional recreational opportunities that might not be available within the City's parks and recreation system. In total, 14 recreation providers have been identified within the Cleveland area, encompassing diverse types of recreational activities.

- Gym/Fitness
- Martial Arts
- Soccer
- Bubble Soccer
- Shooting Sports
- School Athletics



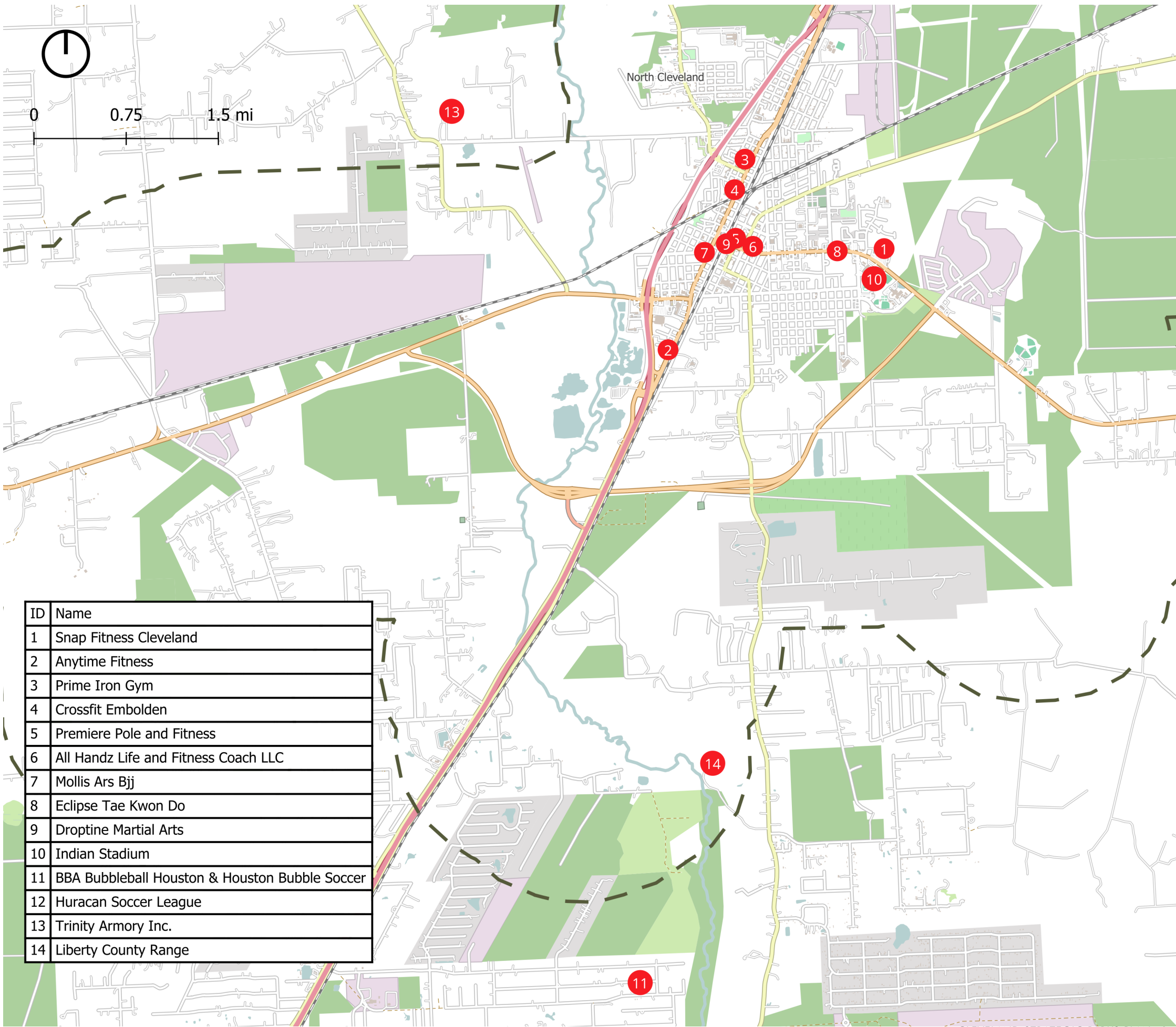
Cleveland has several private gyms and fitness centers, including Snap Fitness, that cater to local recreational and exercise needs.



The Golf Club at The Grand, located within the Grand Oaks Reserve, offers a variety of amenities including a pool, splash pad, and additional entertainment.



The Huracan Soccer League is a private soccer program with facilities located approximately 10 miles west of Cleveland. The facility includes four regulation soccer fields with lighting, seating, and concessions. The league caters to the Hispanic community in the region.



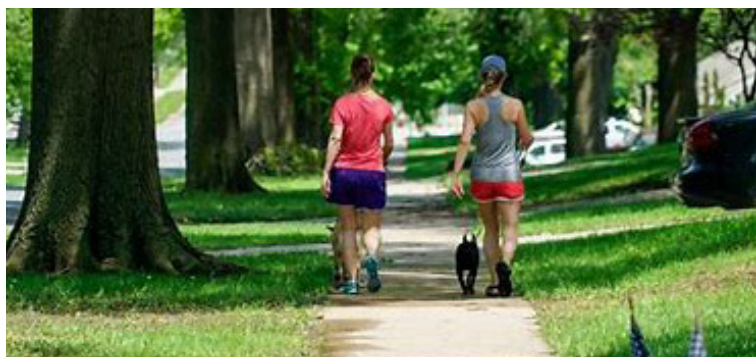
ID	Name
1	Snap Fitness Cleveland
2	Anytime Fitness
3	Prime Iron Gym
4	Crossfit Embolden
5	Premiere Pole and Fitness
6	All Handz Life and Fitness Coach LLC
7	Mollis Ars Bjj
8	Eclipse Tae Kwon Do
9	Droptine Martial Arts
10	Indian Stadium
11	BBA Bubbleball Houston & Houston Bubble Soccer
12	Huracan Soccer League
13	Trinity Armory Inc.
14	Liberty County Range

10-Minute Walk Analysis

A Park Within a 10 Minute Walk from Home

A collaborative effort between The Trust for Public Land, the Urban Land Institute, and the National Recreation and Park Association initiated a campaign called “10 minute Walk” with a goal to “ensure there’s a park within a 10 minute walk of every person, in every neighborhood, in every City across America”. The movement challenges mayors to make a commitment to achieving this goal in their communities. Cities can join the movement by signing up online at 10minutewalk.org.

To understand where Cleveland currently measures against the “10 Minute Walk” test, an analysis was conducted using Geographic Information Systems (GIS) software to calculate the proximity of households to parks in the City, both public parks and private. Rather than using a simple circular radius, the analysis considers only the practical means of walking to the park along existing roads, which have sidewalks in most cases. This provides a more meaningful illustration of where service gaps exist in the parks system.



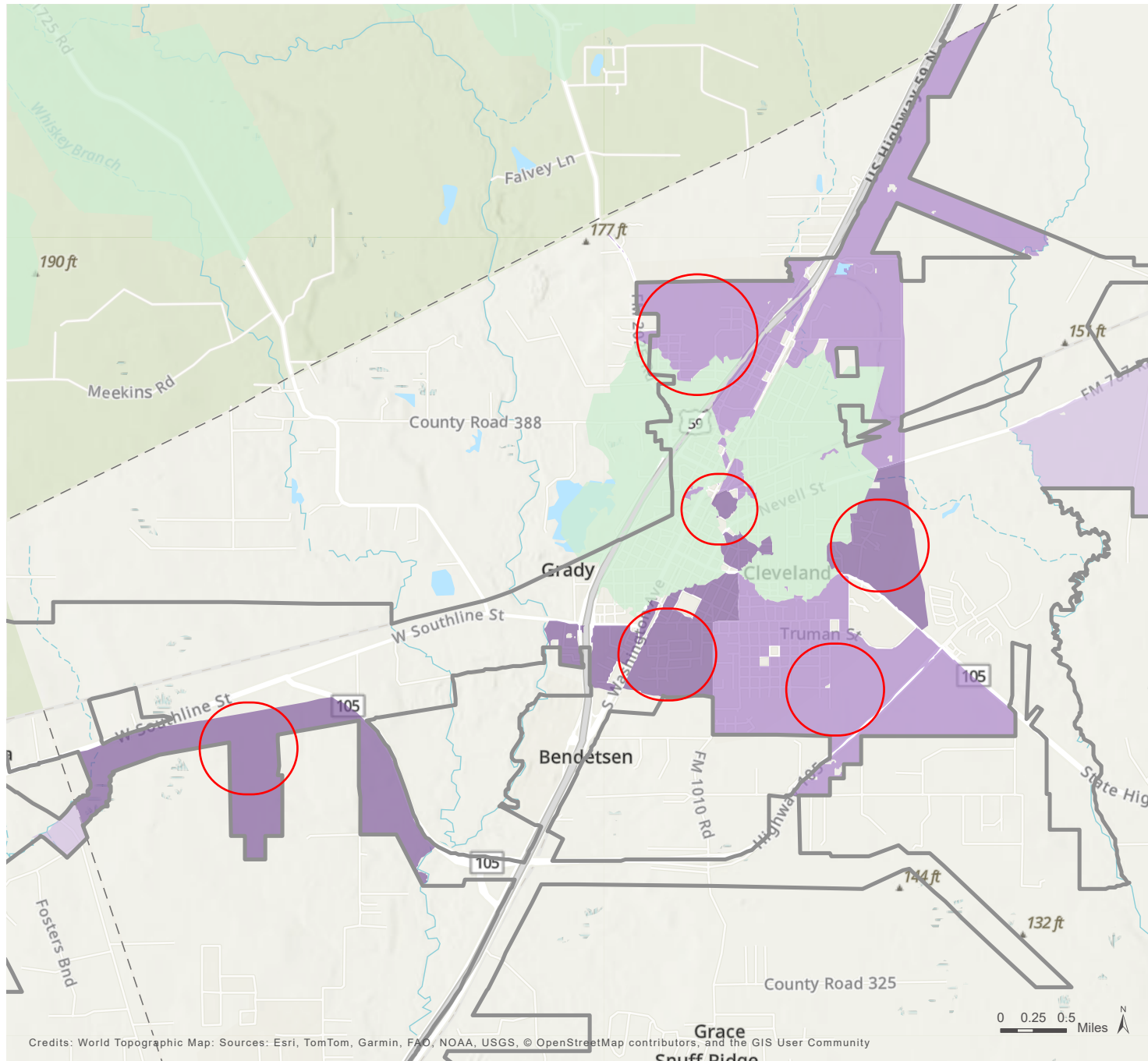
According to the most recent data from Parkserve™ (see Table 1), the 10 Minute Walk database from the Trust for Public Land (TPL), Cleveland has 25% (1,666 residents) of the population living within a 10 minute walk to a park, and 75% of residents living further away. Comparing with other cities in Texas, Cleveland has significant shortage in park coverage. The TPL data is based on the ESRI 2023 Demographic Forecast Block Groups data.

The map on the following page illustrates the areas of the community within a 10 minute walk of a park in green. The red circles highlight residential areas that are not within that distance and are known as ‘service gaps’. Where opportunities are available, these are target areas to consider for development of parks if land is available. This visualization was conducted using ESRI’s ArcGIS Online platform to perform the ‘proximity analysis’. The analysis only considers public parks, and proximity is measured as a distance along streets to park access points.

City Name	Population within a 10 minute Walk to a park	Number of Residents living within a 10 minute walk to a park
Cleveland, TX	25%	1,666
Bellaire, TX	79.6%	13,786
Cedar Park, TX	79.0%	52,513
Deer Park, TX	71.2%	24,929
Huntsville, TX	65.0%	27,132
Seabrook, TX	59.5%	8,475
Texas City, TX	58.8%	32,135
La Porte, TX	55.3%	19,538
Brenham, TX	48.4%	8,213
Leander, TX	53.8%	22,919
Georgetown, TX	52.7%	32,895
Jacinto City, TX	47.9%	5,261
Missouri City, TX	45.9%	38,831
Baytown, TX	45.7%	18,641
Katy, TX	39.5%	6,764
Sugar Land, TX	37.8%	34,750
New Braunfels, TX	34.3%	28,035
Alvin, TX	31.8%	8,899
Rosenberg, TX	30.5%	11,785
Pearland, TX	23.5%	28,525
Boerne, TX	61.4%	11,277

Table 1. Comparison of Texas cities’ 10 minute walk level of service. Source: Parkserve™ by the Trust for Public Land, <https://www.tpl.org/city/cleveland-texas>

ParkServe Map Export



- ParkServe Place
- 10-minute walk service area
- Priority areas for new parks (place)
 - Very high priority
 - High priority
 - Moderate priority
 - World_Hillshade



03

LOCAL DEMAND

Parks and Recreation Survey

Online Parks and Recreation Survey

Survey Response

Of all survey responses received, 45% came from residents reporting to live within the City Limits or ETJ of Cleveland, based on their submitted addresses. (See map on opposite page) This is based on a total of 107 responses that provided an address on the survey questionnaire.

An online survey was conducted in September and October of 2024. Participants answered a series of questions on various topics concerning new and improved parks, recreation amenities, activities, programs, and more. The survey received 177 responses.

Of the responses, 45% came from residents within the City Limits or ETJ of Cleveland, according to their submitted addresses. This percentage is based on 107 responses that included an address in the survey questionnaire.

Key Findings

1. Survey participants expressed interest in the following features for existing or future city parks:
 - Biking/Hiking Trails (44.98%)
 - Swimming Pool (36.84%)
 - Playgrounds (33.97%)
 - Recreation/Community Center (30.14%)
 - Outdoor Fitness Space (21.05%)
2. When rating the importance of **biking and hiking trails** on a scale of 1 to 5, 44.5% of responses rated them as 5 (very important).

3. When rating the importance of **sidewalks** on a scale of 1 to 5, 65.1% of responses rated them as 5 (very important).
4. When rating the importance of **recreational programming and community events** on a scale of 1 to 5, 52.5% of responses rated them as 5 (very important).

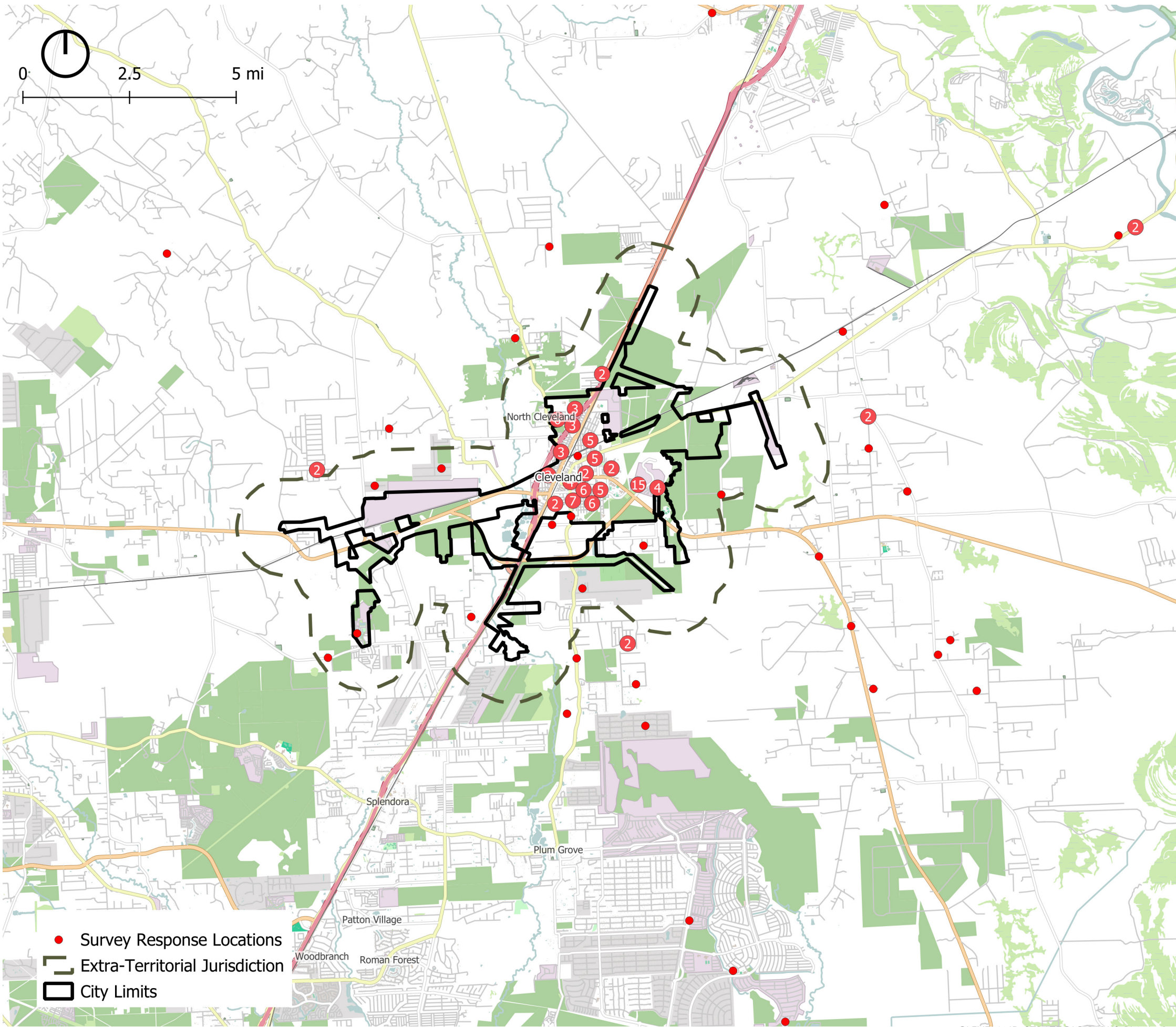
Most frequently mentioned programs and community events:

- Festivals and Seasonal Events (21 mentions)
- Recreation and Fitness (20 mentions)
- Youth and Family Programs (19 mentions)
- Music and Concerts (17 mentions)

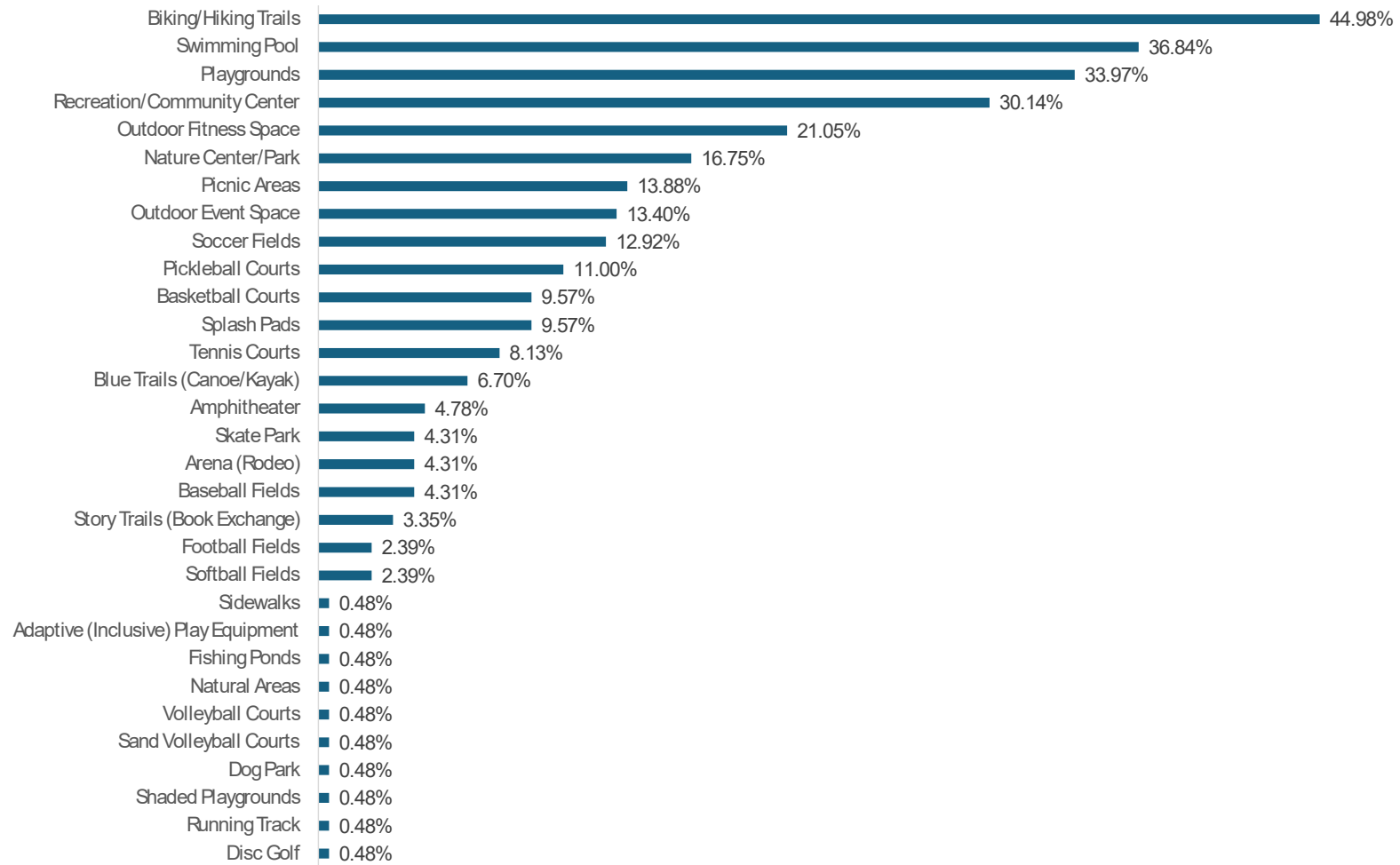
5. When asked how likely they were to support a municipal bond to fund park improvements, on a scale of 1 to 5, a total of 46.6% responded with 5 (very likely) and 23.3% responded with 4 (likely). This means 69.9% of survey participants are more likely to support a bond to fund parks and recreation projects.

An open-ended question was provided on the survey to hear opinions and concerns from residents about their parks and recreation needs. Responses varied greatly, but there was an overall theme of wanting better upkeep of parks and facilities and a desire to have new, updated, a more varied recreation options.

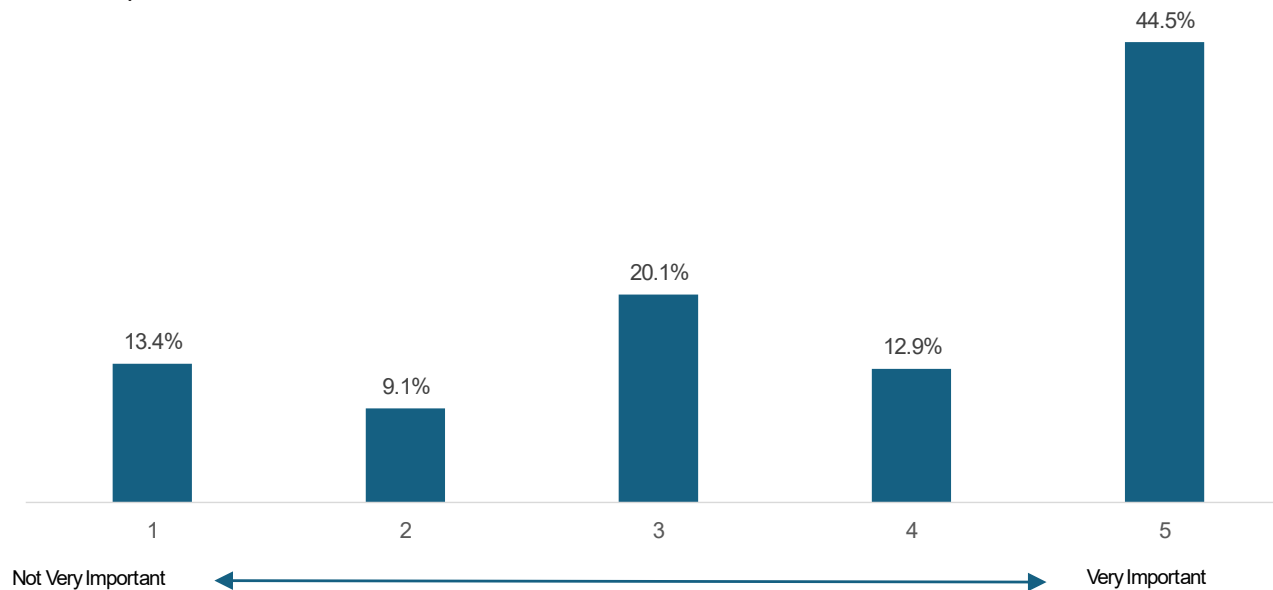




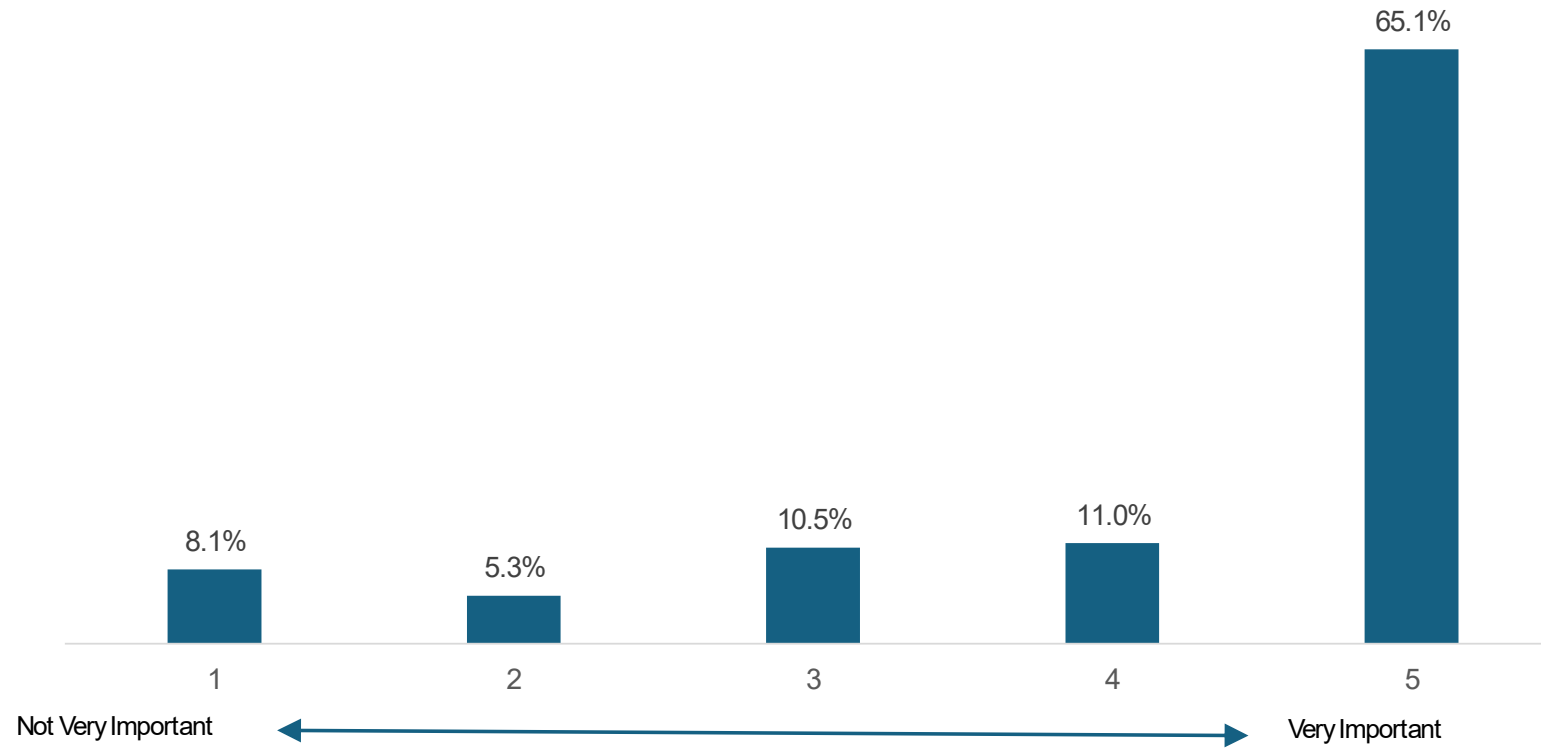
“What are the top 3 features that you and your family would like to see in existing or future City parks?”



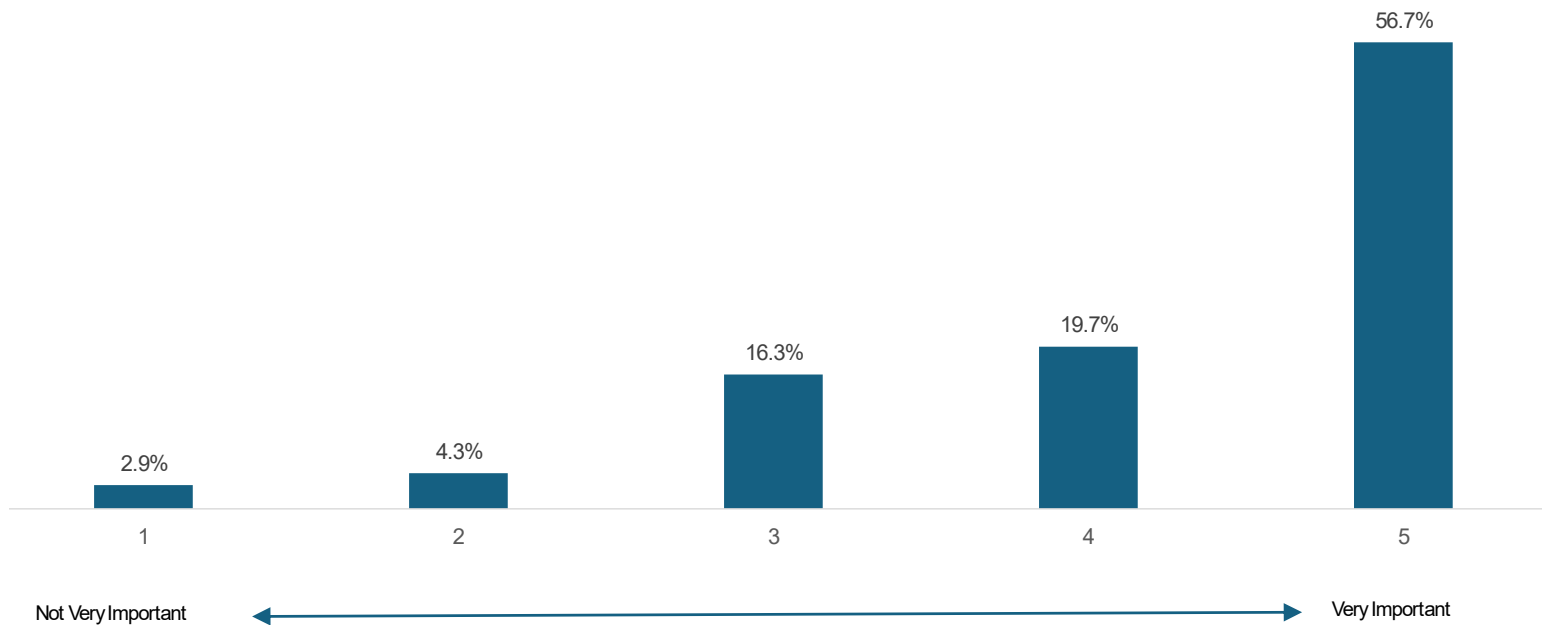
How important are biking and hiking trails to you and your family? (On a scale of 1 to 5)



How important are sidewalks to you and your family?



How Important are recreational programming and community events to you and your family?



What types of recreation programming and community events would you like to see hosted by the City of Cleveland?

Based on the survey responses from Cleveland residents, the following is a categorized summary of their residents' desires for recreation programming and community events:

1. Festivals and Seasonal Events (22 mentions)

Fall festivals, spring festivals, strawberry festivals (8 mentions)
Holiday-themed events, especially geared toward diverse cultures (e.g., El Grito, Día de los Muertos, Virgen de Guadalupe) (5 mentions)
Festivals with vendor booths, games, petting zoos (9 mentions)

2. Farmers Markets (14 mentions)

Farmers markets and organic markets (8 mentions)
Farmers markets with local food trucks and craft vendors (6 mentions)

3. Music and Concerts (17 mentions)

Outdoor concerts, music festivals, music series (10 mentions)
Jazz, Irish music festivals, local live music performances (4 mentions)
Community shows (theater, dance, music) (3 mentions)

4. Youth and Family Programs (23 mentions)

Kids sports leagues (soccer, volleyball, Little League) (6 mentions)
Family-friendly activities, especially for children (9 mentions)
Craft classes, educational programs for children (7 mentions)

5. Recreation and Fitness (27 mentions)

YMCA or community recreation center with pools, gyms, rock walls (8 mentions)
Swimming pools, swim lessons (8 mentions)
Yoga, Zumba, running groups, outdoor fitness events (11 mentions)

6. Cultural and Educational Programs (12 mentions)

Arts and crafts programs (beadwork, sewing, DIY seminars) (6 mentions)
Educational events on the environment, nature programs for kids (6 mentions)

7. Movies and Entertainment (10 mentions)

Movie nights (4 mentions)
Theater productions, community film screenings (3 mentions)
Entertainment centers (bowling, Max Bowl-style) (3 mentions)

8. Sporting Events and Tournaments (11 mentions)

5K/10K races, running events (3 mentions)
Soccer and softball leagues (4 mentions)
Other sports tournaments (4 mentions)

9. Community Spaces and Gardens (7 mentions)

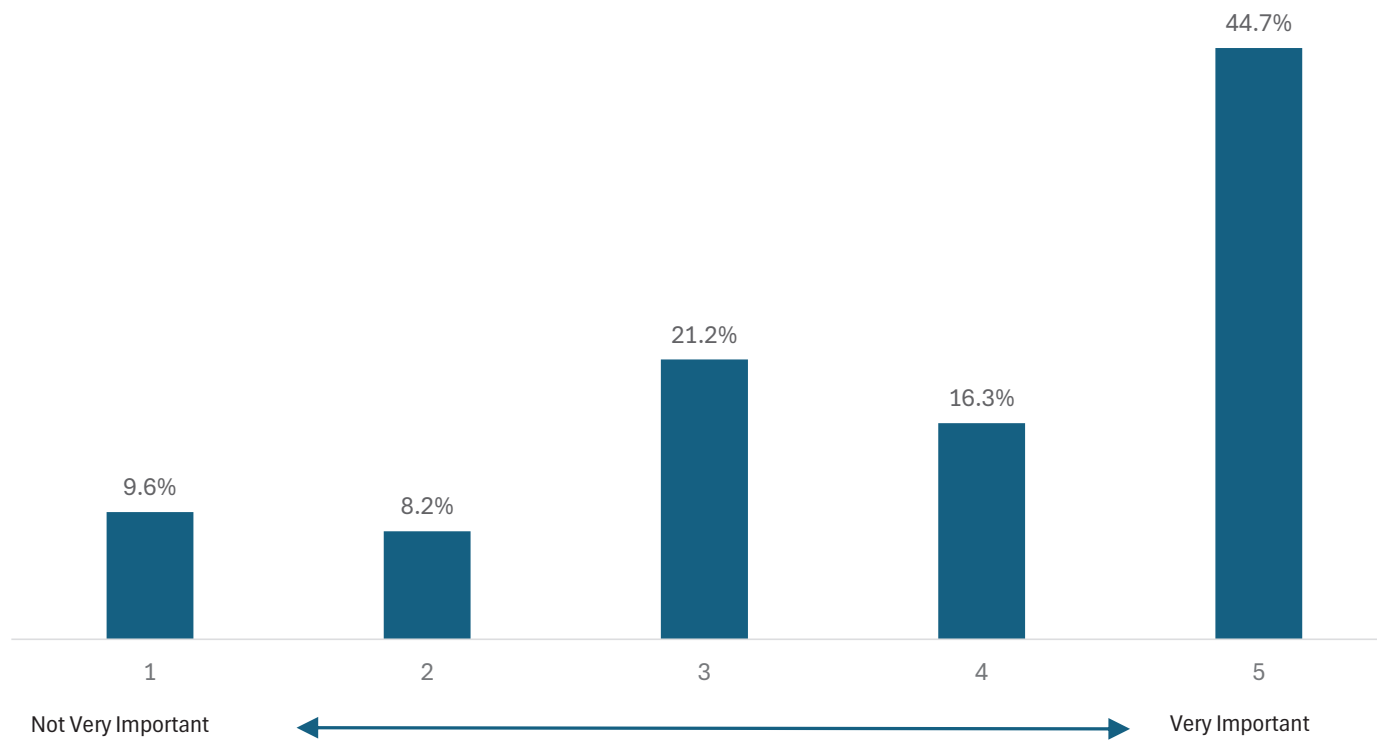
Community gardens, particularly for seniors and children (4 mentions)
Walking parks, nature centers (3 mentions)

10. Other Special Requests (7 mentions)

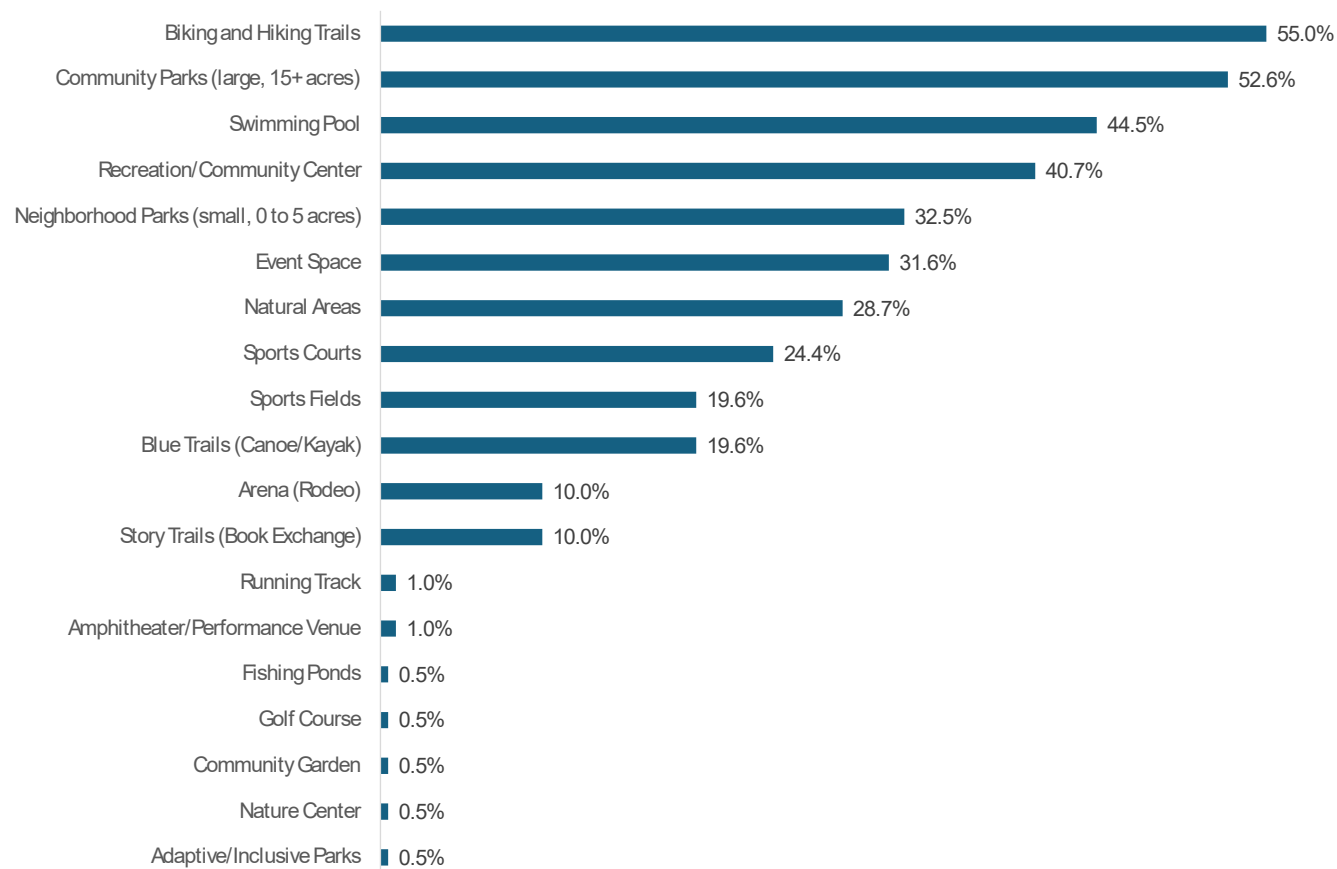
Skating rink, bowling alley, Max Bowl-style entertainment center (3 mentions)
Fun and unique events (4 mentions)

This breakdown prioritizes by frequency of mention, reflecting which types of activities residents expressed interest in most.

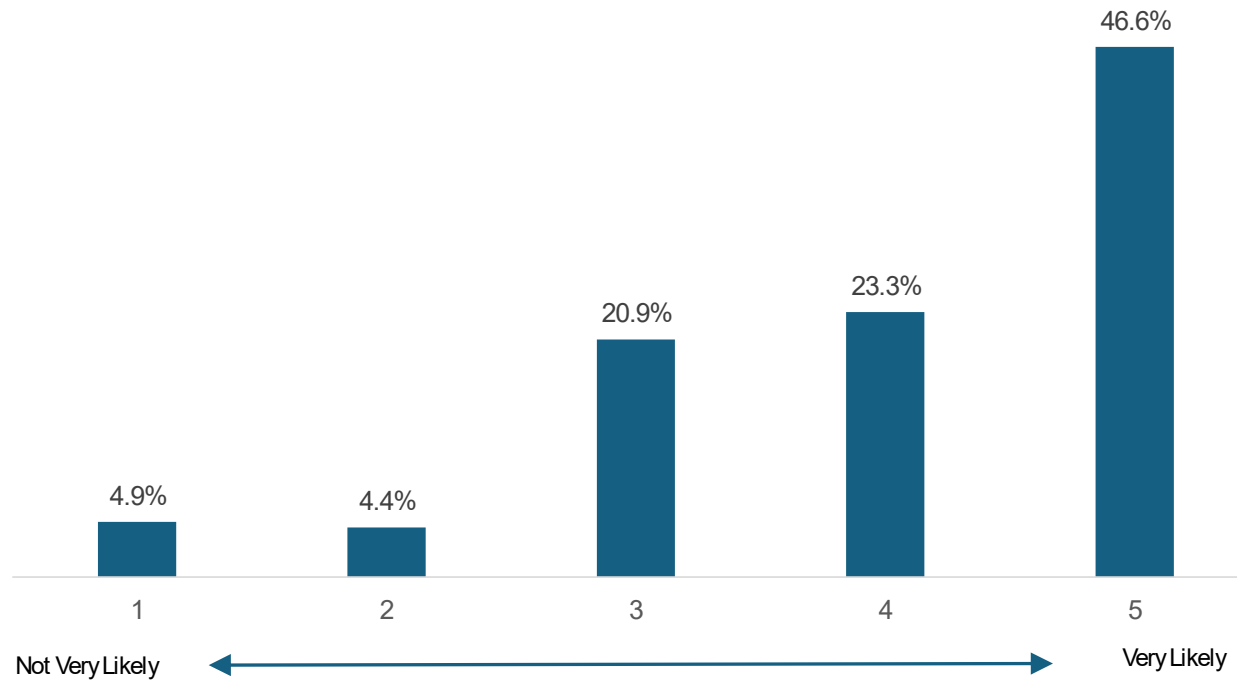
How important is having public art throughout the City and parks to you and your family?



If the City were to acquire more parkland in the future, what types of parks should be developed?



How likely would you be willing to support a municipal bond to fund the development of new parks and facilities in Cleveland?



Is there anything else you would like us to know about your parks and recreation needs?

1. Park Improvements and Facilities (41 mentions)

- Pool: Many residents emphasized the need for a public pool, water parks, or splash pad improvements (10 mentions).
- Playground Improvements: Requests for playgrounds with shade covers, benches, and safety features for hot weather (8 mentions).
- Park cleanliness, maintenance, and safety: Comments highlighted the need to clean and update existing parks, especially Stancil Park, and to ensure they are safe (7 mentions).
- More sports facilities: Suggestions for sports fields, batting cages, basketball courts, and facilities for older kids and teens (7 mentions).
- Walking/running tracks: Many asked for running trails or fitness areas, with some requesting night lighting (8 mentions).
- One request to keep the splash pad operating for longer periods throughout the year (1 mention)

2. Indoor Recreation and Community Centers (15 mentions)

- Several residents called for an indoor recreation center with features like basketball courts, indoor swimming pools, fitness areas, and places for children and teens (7 mentions).
- There were also calls for indoor playgrounds and areas protected from the heat or rain (4 mentions).
- Requests for indoor activities to be protected from crime and homelessness were also mentioned (4 mentions).

3. Environmental Features and Nature Spaces (13 mentions)

- A significant number of residents requested native plant gardens, butterfly sections, prairie centers, and spaces that promote environmental awareness (6 mentions).
- Suggestions for parks with walking trails, ponds, and seating areas where people can enjoy nature (4 mentions).
- Some residents wanted a butterfly garden for monarchs and bees, with native plantings (3 mentions).

4. Family-Friendly and Youth Activities (12 mentions)

- Many people expressed a need for youth-focused activities and spaces that provide safe, positive alternatives for kids and teenagers (8 mentions).
- Additional requests for family-friendly activities that promote spending time together, such as outdoor gyms or walking areas (4 mentions).

5. Event and Community Spaces (8 mentions)

- Several comments mentioned the need for a dedicated event space or amphitheater for community gatherings (4 mentions).
- More space and parking for events was also requested (3 mentions).
- One suggestion was to use rooftop covers for outdoor event spaces (1 mention).

6. Publicity and Communication (6 mentions)

- Residents want better publicity and communication about community events, preferring updates through channels like newsletters, Eventbrite, and social media rather than relying on Facebook alone (4 mentions).
- Suggestions to advertise existing parks and facilities more effectively were mentioned (2 mentions).

7. Specialty Parks and Features (5 mentions)

- Requests for specific features such as a dog park, Discovery Green-style parks, or spaces designed for special needs children (5 mentions).

8. Safety and Crime Concerns (4 mentions)

- Several comments expressed concerns about crime, drugs, and homelessness in parks and called for measures to ensure parks and recreation areas are safe and secure (4 mentions).
- One mention of a desire for more lights at parks (1 mention)

9. Entertainment and Unique Features (4 mentions)

- Residents suggested adding unique entertainment features like bowling alleys, disc golf, giant games, and mini golf (4 mentions).

10. Community Engagement and Programs (3 mentions)

- Some residents emphasized the need for more community programs and events that bring families and children together, like movie nights and educational programs (3 mentions).

The overall theme highlights a need for safer, well-maintained parks with improved facilities for children, families, and youth, while also focusing on environmental and recreational diversity.

Survey Participant Comments on Parks and Recreation Needs

- We definitely need more Fun things for people to do so they stay out of trouble!
- Running track, outdoor fitness court(low cost and some grant funded)
- I would like a newsletter to be sent out to our home, would love more native plants, better recycling system, anything that helps the environment and the insects, a butterfly section for the monarchs and bees would be amazing and will help many children get in touch with nature. More advertising for our community events, so far I only see them on Facebook sometimes. I mainly use eventbrite, allevents, instagram and tiktok.
- More space, more parking. I want an event space/Amphitheater!
- There is a great park space here in North Cleveland that needs to be developed. We could use a playground at Baldwin Park.
- Stancil park needs improvement.
- Native plant/prairie centers, learning center, community craft classes like making pottery, community gardens
- Public water parks for the kids to cool off during the summer. More sports facilities and practice fields like batting cages
- Movie nights
- Update and improvements to rodeo arena at Stancil Park
- Pool and waterslide
- Advertise!..just push what you have and are doing
- Place rooftop covers on playgrounds so that they aren't too hot for the kids to play in, since we are having almost 100 degree weather. I have to travel to New Caney to take my kids to the park since their parks have more shade in their playgrounds. Or an indoor playground if you build a community center so kids can play on super hot and rainy days. .
- Take care of what exists before you ask the community for money. The splash pad is small with inconsistent hours. A pool will just get filled in like previous ones. Old City Park is known for illicit activity at all hours. A lot of the equipment has been there since i was a kid and im THIRTY SIX! Publicity for the municipal playgrounds is poor. Samuel Wiley needs equipment.
- We really need a pool. We have to travel to other communities to enjoy one.
- Make them friendly for all ages. Also make them handicap accessible for children and their families.
- Cleveland needs to start thinking more about the kids now and our future.
- Fitness, tracks to run and jog. Lighting for the night running trails.
- What kind of art?
- An indoor recreation building with basket ball, racket ball rooms, and with indoor swimming pool or at least a covered pool like Conroe Recreation. We need things for kids ages 10-18 years old to do.
- More recreation (esp indoor activity options) would be amazing, but ALL must be properly protected from crime, drugs, becoming homeless camps, etc. MUCH NEEDED indoor activities for all ages as it's so hot or raining most of the year!
- I'm looking forward to seeing what the future holds
- Our children need more activities in our area. Idle hands bring trouble. Our families need more areas to spend quality time together.
- Clean and safe
- Anything safe and exciting for Families. We currently drive across North Houston for events.
- Keep swings and climbing in our parks. Require people to sign a waiver of liability if you have to but please don't baby proof nature. These kids need to be challenged while their young to build confidence and develop physical fundamental skills.
- Sport it's a better way to clear you mind
- Yes! Please reach this park in Humble Tx. The park is called Schott Park which have 2 mile swing trails, volleyball court, a covered pavilion, clean restrooms. I do drive down to Humble on some afternoons just to walk the trails. Also! To have a bowling/games event here in Cleveland. Another example like Max Bowl located in Humble. Just look into it to make something similar to bring to Cleveland
- Keep it clean and serviceable
- Any nice, maintained space would be great
- Dog parks
- There is no where for us to take our children to play that is safe
- Update/clean up current parks, especially the basketball courts.
- Get the lights working so kids can play in the evenings
- At this time there isn't really nothing good here in Cleveland, so I would like to see any recreation programs & events. Even have more pediatric doctors & dentist
- We need a pool
- We live in Texas. The splash pad should be open longer. There is a whole large community of toddler/preschool parents as well as homeschoolers who would LOVE

Survey Participant Comments on Parks and Recreation Needs

to still be able to utilize the splash pad after public school starts. Sometimes, we prefer to have that time where there are not as many school aged children running around our babies and toddlers!

- I would love more benches around playground equipment for parents to be close to their children while they play. Also, a shade or cover of some kind so the playground equipment is not so hot to play on and children are protected from the sun.
- Better benches, not wooden
- It is extremely necessary to have somewhere to go out as a family and enjoy and be proud to have here in Cleveland.
- Create an amazing park like Discovery Green in Houston.
- Very much needed to improve Cleveland.
- Walking parks would be great. But I'm concerned they would be maintained, as our city currently does not enforce current ordinances. City appearance is horrible.
- Take care of the parks we have and/or update them with quality products. In a good way. Not bandaid them like y'all do every thing else in this town.
- Take better care of what we already have. You're poor stewards of our tax dollars.
- More running trails as the closest ones are in the porter new Caney area
- A Kite Festival in April would be amazing and fun. Music and theatre like Miller Outdoor. We'd love for Cleveland to offer a Firefighters Festival like Houston did, with educational shows, custom ornaments, food vendors, demonstrations, family education and fun, meet local Heroes and ask questions. Same for LEO, like Harris County does, where people meet Officers, Police Horses, get into the types of vehicles, get magnets and merch. and ask questions. Same for a Community Medical Event. Meet EMT staff and ask questions. Discovery Green park is an amazing example for outdoor ideas for families. We need parks in Cleveland for Special Needs, like Morgans Wonderland in San Antonio, a perfect example for outdoor Special Needs. Parks for Older Kids and Teens, not just toddlers. Homeschool activities like Aquatic Science and Forest Science. Need family entertainment options. Outdoor Bowling, Giant Chess, Giant Bowling, Giant Jenga, such as the Malls offer outdoors. Disc Golf. A Mini Golf like Beaumont, or a lagoon like Dayton. More outdoor Basketball. Soccer. Hot Air Balloon event like Conroe will have in October. Outdoor Art classes. Outdoor Gyms. Mini Train like Zube park in Hockley. We need outdoor equipment like Bungee Jumping and Archery. Cleveland TX needs to be a unique Entertainment Hub for Families, Kids, Teens, Special Needs. Chalk Art Festival. Outdoor STEM projects. Cleveland TX can be the cool "IT" Destination for Homeschool Families, with all the land available. Endless options.
- Outdoor fitness area
- We need an indoor and outdoor swimming facility with slides, lessons, and adult only times!
- Native plants, trees, walking trails, pond, area to sit and hang out (covered) (nice if a nice outdoorsy healthy food restaurant was nearby
- Why sidewalks in the city if no one will walk in it
- Do not raise property taxes to fund make these changes
- We really need a city pool
- More space in general would be nice. Cleveland feels too crowded
- We need more outdoor spaces where our children can play and adults can decompress
- Fit Park equipment parks need beautiful landscape
- More outdoor activities for moms to do with their kids buying the day. Walking trails that are stroller friendly, playgrounds, fitness area. Moms would like to be able to workout while the kids enjoy time outside. Currently driving 25+ minutes for this
- Keep the parts assessable to the public seven days a week And maintain the park.
- Safety concerns
- I live outside city limits so I can offer an opinion on the bond
- Safe walking/running tracks
- Please put roof covers on playgrounds because they get very hot in the sun. Place many benches close to playgrounds too for parents to sit and watch their kids.
- We definitely need more stuff around Cleveland for the youth in our community
- "I would love to see more things that attract our youth. There is little to nothing for our youth of this community to do, which leads them to get into trouble and crime. At least when I was growing up here we had the skating rink and theater. Now there is nothing.
- Maybe it would cut down on crime and drugs in our community if they had fun, positive choices. "
- Loquat trees are good ornamental trees for parks
- More lights
- Need a round about
- Pool
- More city supported youth programs
- Splash pad at Cleveland old city pool is never on during hot days



04

RECOMMENDATIONS

Recommendations

Based on stakeholder feedback, an assessment of existing parks and facilities, and community research, several recommendations for improvements and additions to the parks and recreation system have been identified for consideration. It is essential for any parks and recreation organization to ensure that current assets are well-maintained before expanding the system with new parks and facilities. Therefore, the following recommendations are provided for existing and future parks and facilities:

Samuel Wiley Park

Samuel Wiley Park offers a variety of amenities including a pavilion, basketball court, baseball field, playground, restrooms, and picnic areas. Improvements were made from 2005 to 2009 with funding from a Texas Parks and Wildlife Department grant and community contributions. However, many features are now aging and need replacement or renovation.

The large pavilion is frequently used and is in generally good structural condition. However, consistent with the survey results regarding maintenance, surface rust on the framing and roof should be painted to preserve the structure. One possible consideration is to remove permanent fencing from the field, creating multi-use field space. This would encourage utilization beyond baseball and enhance overall visitor attraction. A loop trail could provide exercise opportunities as well as easier access to other areas of the park. Implementing this may require adjustments to existing fencing to accommodate the pathway.

Suggested renovations, additions or replacements for the park could include:

- Renovate or Replace Restrooms
- Replace All Playground Equipment
- Resurface Basketball Court In Next 5 Years
- Replace Metal Picnic Tables and Benches



Parks with good amenities, like rest rooms, are more appealing to visitors, increasing community engagement and use of spaces.



The covered basketball court at Bear Branch in The Woodlands, TX provides a better overall playing experience. Parks with such amenities become central hubs for recreation and connection..



Replacing amenities such as playground equipment and picnic tables will improve the overall look of the park, making it a more attractive destination for visitors.



Conceptual drawing of Samuel Wiley Park renovation.

Opinion of Probable Cost - Sam Wiley Park Renovation

The following is a planning-level opinion of probable cost for the renovation of Sam Wiley Park as shown in the concept drawing. Should the City move forward with renovation of this park, the design development and construction documentation phases of the project will refine the costs. These costs should be used to help plan budgets for renovation.

Preliminary Opinion of Probable Costs (OPC)							SAM-WILEY PARK		
#	Item / Description	Qty	Unit	Unit Rate	Item Cost	Contractors OH/Markup	-5% Low	Range Mid	5% High
1	General Requirements				\$ 60,000	\$ 6,000	\$ 62,700	\$ 66,000	\$ 69,300
	Mobilization, Demobilization & Maintenance	1	allow	3.5%	\$ 28,000	\$ 2,800	\$ 29,260	\$ 30,800	\$ 32,340
	Bonds & Insurance	1	allow	3%	\$ 24,000	\$ 2,400	\$ 25,080	\$ 26,400	\$ 27,720
	Traffic Control, Surveying, Safety Plan	1	allow	1%	\$ 8,000	\$ 800	\$ 8,360	\$ 8,800	\$ 9,240
2	Demolition/Preservation				\$ 8,000	\$ 800	\$ 8,360	\$ 8,800	\$ 9,240
	Demolition & Clearing	1	allow	1%	\$ 8,000	\$ 800	\$ 8,360	\$ 8,800	\$ 9,240
3	Grading, Drainage & Utilities				\$ 60,000	\$ 6,000	\$ 62,700	\$ 66,000	\$ 69,300
	Mass Grading, Site Work, & Erosion Control	1	allow	\$ 10,000	\$ 10,000	\$ 1,000	\$ 10,450	\$ 11,000	\$ 11,550
	Misc. Utilities	1	ls	\$ 50,000	\$ 50,000	\$ 5,000	\$ 52,250	\$ 55,000	\$ 57,750
4	Site Paving Infrastructure				\$ 96,293	\$ 9,629	\$ 100,626	\$ 105,922	\$ 111,218
	Concrete Loop Trail	9,504	sf	\$ 7.50	\$ 71,280	\$ 7,128	\$ 74,488	\$ 78,408	\$ 82,328
	Concrete Sidewalks	3,335	sf	\$ 7.50	\$ 25,013	\$ 2,501	\$ 26,138	\$ 27,514	\$ 28,889
6	Architecture				\$ 40,000	\$ 4,000	\$ 41,800	\$ 44,000	\$ 46,200
	Restroom Upgrades	1	allow	\$ 30,000	\$ 30,000	\$ 3,000	\$ 31,350	\$ 33,000	\$ 34,650
	Large Pavilion Upgrades	1	allow	\$ 10,000	\$ 10,000	\$ 1,000	\$ 10,450	\$ 11,000	\$ 11,550
9	Site Furnishings				\$ 32,000	\$ 3,200	\$ 33,440	\$ 35,200	\$ 36,960
	Site Furniture	1	allow	\$ 32,000	\$ 32,000	\$ 3,200	\$ 33,440	\$ 35,200	\$ 36,960
10	Playground Furnishings				\$ 501,365	\$ 50,137	\$ 523,926	\$ 551,502	\$ 579,077
	Large Playground	1	allow	\$ 350,000	\$ 350,000	\$ 35,000	\$ 365,750	\$ 385,000	\$ 404,250
	Todler Playground	1	allow	\$ 120,000	\$ 120,000	\$ 12,000	\$ 125,400	\$ 132,000	\$ 138,600
	Fibar Surfacing	9500	sf	\$ 2.25	\$ 21,375	\$ 2,138	\$ 22,337	\$ 23,513	\$ 24,688
	Perimeter Curb	555	lf	\$ 18	\$ 9,990	\$ 999	\$ 10,440	\$ 10,989	\$ 11,538
11	Softscapes				\$ 30,000	\$ 3,000	\$ 31,350	\$ 33,000	\$ 34,650
	Planting/Irrigation	1	allow	\$ 30,000	\$ 30,000	\$ 3,000	\$ 31,350	\$ 33,000	\$ 34,650
	Subtotal				\$ 827,658	\$ 82,766	\$ 864,902	\$ 910,423	\$ 955,944
	General Conditions	1	allow	10.0%			\$ 86,490	\$ 91,042	\$ 95,594
	Design Contingency	1	allow	10%			\$ 95,139	\$ 100,147	\$ 105,154
	Design/Soft Cost Professional Services (Survey, Geotech, Permitting)	1	allow	12.75%			\$ 133,433	\$ 140,456	\$ 147,478
	Total Project Cost with Range						\$ 1,179,964	\$ 1,242,068	\$ 1,304,171

Burditt Consultants has no control over the cost of labor, materials, equipment, or services furnished by others, or over the Contractor's methods of determining prices, or over competitive bidding or market conditions. Burditt Consultants cannot and does not guarantee that proposals, bids or actual construction will not vary from opinion of probable costs.

Campbell Park

Campbell Park has experienced several significant changes over the years. The swimming pool was decommissioned in 2015, and a custom splash pad was installed in 2021 to provide a fun and safe aquatic facility. Furthermore, in 2024, a skate park was added to enhance recreational opportunities. The park retains the pool house/restrooms, constructed in 1988 with funding from a Texas Parks and Wildlife Department grant; however, it is showing signs of aging and could be replaced with a new pavilion that includes restrooms.

There are several site furnishings and equipment that should be considered for replacement, including picnic tables, benches, and a swing set, all of which are in poor condition. The park benefits from ample open space and a large parking lot that could be better utilized if additional features were introduced. Between the parking lot and the pool house/splash pad/skatepark area is a spacious lawn area that could accommodate a new attraction.

Suggested new features that address the needs identified in the online survey include the following options for that space:

- Outdoor Fitness Equipment
- All-Abilities Playground
- Additional Splash Pad Features



Area of Interest for adding new park features at Campbell Park (circled in red).



The Fun for All playground in College Station, TX provides a variety of play elements for children of all abilities.



Outdoor fitness equipment is available in city parks through the National Fitness Campaign, which installs Fitness Courts nationwide. Grants are available to bring these customized features to Cleveland. Apply via this contact form: <https://www.nationalfitnesscampaign.com/contact>

Old City Park

Old City Park has long been a favored destination for picnics, family gatherings, and birthday celebrations for numerous visitors. Despite its popularity, certain amenities have begun to age. The playground was replaced in 2024, ensuring it remains a safe and enjoyable area for children. Consideration may be warranted for the replacement of picnic tables and benches, as well as the installation of well-laid sidewalks to improve accessibility to play and picnic areas. While the restrooms remain functional, they are also due for renovation or complete replacement to enhance comfort and cleanliness. The pavilion is generally in good condition and continues to provide reliable shelter for various events.

Looking ahead, the following recommendations are in line with input provided by survey respondents, and would breath new life into the park:

- Upgrade swings/ add other play equipment (spinners)
- Replace picnic tables and benches
- Renovate or replace restrooms
- Update basketball court with new surface and goals
- Provide sidewalks for better accessibility to various areas



The new playground at Old City Park is a great step to revitalizing the park.



Accessibility within the park should be enhanced by upgrading existing sidewalks and adding new sidewalks to connect various activity areas.



Updating amenities like restrooms, picnic tables, benches, and specific play equipment will create a more inviting environment for park visitors.



Cleveland Municipal Sports Park

The Cleveland Municipal Sports Park was inaugurated in 2014 with the completion of its initial development phase. The primary focus of this phase included the establishment of facilities for baseball, softball, and football. The conceptual master plan allows for the future expansion to incorporate additional elements.

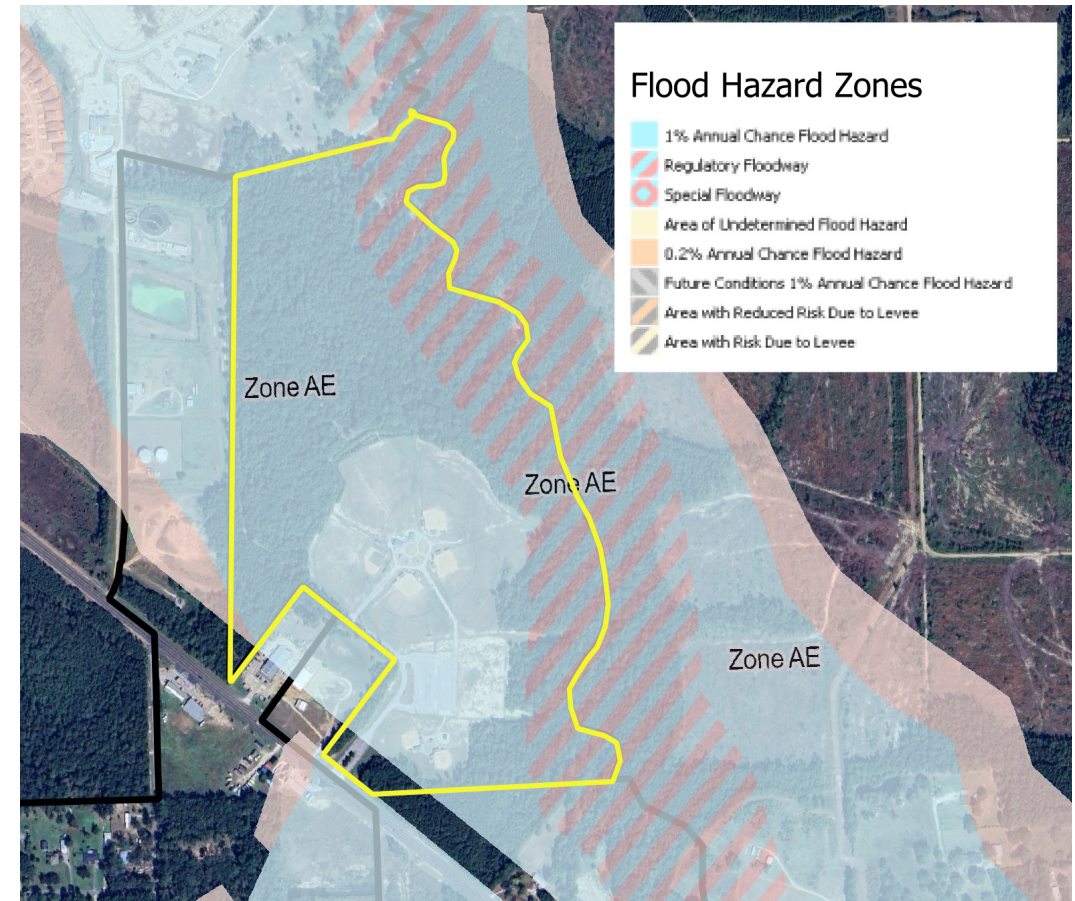
Phase 1 Improvements (existing)

- Baseball Diamonds (3)
- Softball Diamond (1)
- Tee Ball Diamonds (2)
- Football Field (1)
- Parking
- Concessions
- Restrooms
- Playground

Recreation Demand

The online survey results show varied interest in new and upgraded amenities within City parks. Items such as playgrounds, outdoor fitness equipment, swimming pools, and recreation centers are requested and may be most appropriate for centralized locations within parks in Cleveland's core. Other features like an amphitheater, hike and bike trails, soccer fields, and natural areas are well-suited for Cleveland Municipal Park due to the available land.

Approximately 37.12 acres of land are available at the park for development. The remaining undeveloped land is within the Regulatory Floodway and cannot be disturbed. Since most of the park lies within the 100-Year Floodplain, some improvements will require additional design considerations. Completing the build-out of the remainder of the master plan for Cleveland Municipal Sports Park will increase the park's capacity for athletics and create a community park with various features and amenities. The park can serve as a central gathering space for community events and provide opportunities for additional activities.



Though almost all of the park is within the 100-year floodplain, recreation is still achievable on much of the property with some earthwork.



The Cleveland Municipal Sports Park, about 10 years old, is in good condition. Developing the remaining areas will help meet the growing demand for athletic fields and amenities.

Conceptual Master Plan

Cleveland Municipal Park - November 2011

- 1 Park Entry Road
- 2 T-Ball Fields / Bleachers
- 3 Small Concession & Restrooms
- 4 Playground
- 5 Basketball court
- 6 Asphalt Parking Lot
- 7 300' Baseball Field / Covered Bleachers
- 8 Main Concession & Restrooms
- 9 Amphitheater Stage
- 10 Signature Football Field / Raised Seating
- 11 325' Baseball Field / Covered Bleachers
- 12 Adult Baseball Field / Covered Bleachers
- 13 NCAA Soccer Field (240x300)
- 14 Multi-Use Soccer Field (350x240)
- 15 Skate and Wheeled Sports Plaza
- 16 Restrooms
- 17 Maintenance Building
- 18 RV Parking
- 19 Splash Pad
- 20 Pavilion & Restrooms
- 21 U7 (60x90) Soccer Fields
- 22 U12 (210x300) Soccer Field
- 23 U12 / U10 (120x180) Soccer Fields

- 24 Fishing Pier
- 25 Foot Bridge
- 26 Pedestrian Trails
- 27 Batting Cages
- 28 Fishing Pond
- 29 Picnic Sites



Austin Memorial Library

Austin Memorial Library in Cleveland serves as an essential community hub, offering various recreational activities such as youth reading events, the Cleveland Knights Chess Club, tax assistance, computer classes, and more.

Adjacent to the library building is a lawn area covering approximately 9,600 square feet, which is suitable for hosting a range of activities and events. Libraries nationwide are recognizing the benefits of creating outdoor reading areas that accommodate activities unsuitable for the quiet indoor environment, and the recent addition of a wrought iron fence and gate has neatly framed the area, makes it ideal.



Concrete outdoor game tables offer unique recreational spaces, including options for chess, table tennis, foosball, corn hole, and more.

Developing a versatile space with features such as shade, seating, and well-designed landscaping can result in an inviting area for reading, hosting small events, or serving as an outdoor learning environment for children. Additional amenities to consider may include game tables, lighting, and picnic areas.



05

IMPLEMENTATION

Where to Begin

Project Prioritization

The Strategic Parks Plan identifies opportunities for improvements to the parks system and justification through stakeholder input. However, the timing of project implementation is largely a function of funding availability and the City's will to move forward on a given project.

City Council will likely use a variety of mechanisms to fund any major improvements to the parks and recreation system. The goal of this plan is to prioritize improvement of existing parks over development of new parks. These improvements may be made via wholesale park renovation or in phases as funding allows.

Project Design and Construction

When it comes to parks and recreation planning, identifying the needs of residents and developing a vision for the future parks system are important first steps. Once a project has been identified and approved for further study, the process of funding, design and construction can begin.

The proposed park project would likely be funded through a municipal bond, while also exploring other funding mechanisms. Following a decision to move forward on a priority project, the City will need to engage a qualified design team to further program the details of the project.

The Design Development phase of this process will allow the City to further refine the important details that bring the park and recreation project to life. This process will include several iterations of projected costs, revisions and refinements that ultimately will be turned into construction documents. It is important during to continue to gather input from stakeholders during this process to ensure that key details are not left out.

Construction documentation, bidding and construction of the project is the phase where it will be important to have the right team for the job. Quality construction documents followed by strict

adherence to the drawings during construction administration will ultimately determine the quality of the end result. All too often great projects are turned over to a general contractor to be completed with insufficient supervision, resulting in poor performance, change orders and added costs. The City will need the designer to act as an advocate for the City throughout the construction process to ensure success.

As the City continues with improvements and additions to the parks system, funding is often the key player in the decision making process. The following are a variety of State and Federal grant programs available to aid cities in the enhancement of parks and recreation facilities and other public space projects.

Funding Opportunities

As the City continues with improvements and additions to the parks system, funding is often the key player in the decision making process. The following are the primary funding mechanisms for the Parks and Recreation Department. Additionally, there are a variety of State and Federal grant programs available to aid cities in the enhancement of parks and recreation facilities and programs.

Community Development Block Grants -potential funding: up to 80% of project cost or maximum of \$200,000

The Department of Housing and Urban Development (HUD) provides assistance to communities across the nation for a wide range of activities through the Community Development Block Grants Program. These funds are often distributed to individual communities by the state as match-grants to fund projects supporting economic development and improved quality of life. Texas Parks and Wildlife Department awards grants from this program

annually to develop and enhance parks and open space.

Transportation Equity Act (SAFETEA-LU) - Recreation Trails Program

The Transportation Safety Act, also known as the Safe, Accountable, Flexible, Efficient Transportation Act: A Legacy for Users (SAFETEA-LU), provides for the distribution of funds from the Federal Highway Administration (FHWA). The Federal Highway Administration is the largest source of funding for shared use paths, trails and related projects. The Recreational Trails Program, an assistance program to FHWA, distributes funds for a range of activities including:

- Maintenance and restoration of existing trails.
- Development and rehabilitation of trailside and trailhead facilities and trail linkages.
- Purchase and lease of trail construction and maintenance equipment.
- Construction of new trails (with restrictions for new trails on Federal lands).
- Acquisition of easements or property for trails.
- Assessment of trail conditions for accessibility and maintenance.
- Development and dissemination of publications and operation of educational programs to promote safety and environmental protection related to trails (including supporting non-law enforcement trail safety and trail use monitoring patrol programs, and providing trail-related training) (limited to 5 percent of a State's funds).
- State administrative costs related to this program (limited to 7 percent of a State's funds). (typically managed via TRPA *see below)

TRPA Grants Program -potential funding: \$750,000 (match grant)

The Texas Recreation and Parks Account (TRPA) is funded by a portion of Texas sales tax received on select sporting goods. These grants are awarded to applicants annually at varied levels depending on

project type and available resources for the funding cycle. These funds are administered by the Texas Parks and Wildlife Department’s Recreation Grants Branch for five programs including the following:

1. Outdoor Recreation
2. Indoor Recreation (facility)
3. Small Community
4. Regional
5. Community Outdoor Outreach Program

Land and Water Conservation Fund -\$2.4 million apportioned to Texas in 2014

The Land and Water Conservation Fund is a program of the National Park Service that provides matching grants to local governments for acquisition of park land and development of park facilities. An example project in Texas is the Wimberley Blue Hole Regional Park Hays County, which received \$1,909,500 in funding from the LWCF

Special Revenue Funds - Hotel/ Motel Occupancy Tax Fund

This fund is used to account for proceeds from hotel occupancy taxes received during the year. Expenditures from this fund are restricted to tourism activities. An appropriations style budget is adopted for this fund on an annual basis.

Special Revenue Funds - General Obligations Series 2005 Fund

This fund is used to account for the receipt of bond funds and the expenditures of such funds to construct/improve various public buildings, purchase of land for parks and recreation facilities, street improvement projects and sidewalk construction.

Community Development Block Grants

The Department of Housing and Urban Development (HUD) provides assistance to communities across the nation for a wide range of activities through the Community Development Block Grants Program. These funds are often distributed to individual

communities by the state as match-grants to fund projects supporting economic development and improved quality of life. Texas Parks and Wildlife Department awards grants from this program annually to develop and enhance parks and open space.

Economic Development Corporation Type B Projects

The Type B sales tax may be used for projects eligible under Type A, plus quality of life improvement projects. Type B corporations may pay for land, buildings, equipment, facilities, targeted infrastructure and improvements for:

- sports and athletic facilities, tourism and entertainment facilities, convention facilities and public parks;
- related store, restaurant, concession, parking and transportation facilities;
- related street, water and sewer facilities.
-

Parkland Dedication Ordinance

A parkland dedication ordinance is a local government requirement imposed on subdivision developers or builders, mandating that they dedicate land for a park and/or pay a fee to be used by the government entity to acquire and develop park facilities. These dedications are a means of providing park facilities in newly developed areas of a jurisdiction without burdening existing city residents. The philosophy is that because new development generates a need for additional park amenities, the people responsible for creating that need should bear the cost of providing the new amenities.

Cities derive the authority to enact parkland dedication ordinances from case law. In 1984, the Texas Supreme Court concluded in *City of College Station vs Turtle Rock Corporation* that requiring parkland dedication or fees in lieu “was a valid exercise of the city’s police power because it was substantially related to the health, safety and general

welfare of the people.” About 50 cities in Texas have adopted parkland dedication ordinances. Counties do not have express authority to enact parkland dedication ordinances. A brief internet search did not reveal any examples of parkland dedication ordinances in Waller County.

The Turtle Rock case established the constitutionality of parkland dedication in Texas, but it required that “regulation must be reasonable.” It defined reasonable as “a reasonable connection between the increased population arising from the subdivision development and increased park and recreation needs in the neighborhood.” A decade later in *Dolan v. City of Tigard*, the U.S. Supreme Court ruled that there must be a “rough proportionality” between the conditions imposed on a developer and the demand from the projected development. These and other cases suggest that four broad criteria may be used to assess the constitutionality of parkland dedication ordinances in Texas:

- The method of calculating a parkland dedication requirement must demonstrate that it is proportionate to the need created by a new development.
- The ordinance must adhere to the nexus principle.
- The time limit must be set for expending fees-in-lieu.
- The scope and range of the ordinance must be delineated.

The dedication requirement in a parkland dedication ordinance should comprise three elements:

- A land requirement
- A fee-in-lieu alternative to the land requirement
- A parks development fee

According to the 2015 study, *Parkland Dedication Ordinances in Texas: A Missed Opportunity?*, by Professor John Crompton at Texas A&M University, existing residential fees imposed by Texas municipalities ranged from roughly \$500 per dwelling unit to more than \$1,800 per dwelling unit.

