



Community Profile

2 ZIP Codes
 77327 (Cleveland) et al.
 Geography: ZIP Code

Prepared July 2025 by Lone Star College

TX(77327),TX(...

Population Summary	
2010 Total Population	36,011
2020 Total Population	49,786
2020 Group Quarters	638
2025 Total Population	66,088
2025 Group Quarters	629
2030 Total Population	75,874
2025-2030 Annual Rate	2.80%
2025 Total Daytime Population	54,265
Workers	11,333
Residents	42,932
Household Summary	
2010 Households	12,424
2010 Average Household Size	2.85
2020 Total Households	15,891
2020 Average Household Size	3.09
2025 Households	20,512
2025 Average Household Size	3.19
2030 Households	23,378
2030 Average Household Size	3.22
2025-2030 Annual Rate	2.65%
2010 Families	9,129
2010 Average Family Size	3.32
2025 Families	15,288
2025 Average Family Size	3.71
2030 Families	17,294
2030 Average Family Size	3.76
2025-2030 Annual Rate	2.50%
Housing Unit Summary	
2000 Housing Units	12,792
Owner Occupied Housing Units	68.0%
Renter Occupied Housing Units	17.3%
Vacant Housing Units	14.8%
2010 Housing Units	14,509
Owner Occupied Housing Units	65.9%
Renter Occupied Housing Units	19.7%
Vacant Housing Units	14.4%
2020 Housing Units	18,109
Owner Occupied Housing Units	69.8%
Renter Occupied Housing Units	17.9%
Vacant Housing Units	12.2%
2025 Housing Units	23,062
Owner Occupied Housing Units	72.8%
Renter Occupied Housing Units	16.2%
Vacant Housing Units	11.1%
2030 Housing Units	26,179
Owner Occupied Housing Units	74.6%
Renter Occupied Housing Units	14.7%
Vacant Housing Units	10.7%

Data Note: Household population includes persons not residing in group quarters. Average Household Size is the household population divided by total households. Persons in families include the householder and persons related to the householder by birth, marriage, or adoption. Per Capita Income represents the income received by all persons aged 15 years and over divided by the total population.

Source: Esri forecasts for 2025 and 2030. U.S. Census Bureau 2000 and 2010 decennial Census data converted by Esri into 2020 geography.

July 10, 2025



Community Profile

2 ZIP Codes
77327 (Cleveland) et al.
Geography: ZIP Code

Prepared July 2025 by Lone Star College

TX(77327),TX(...)

2025 Households by Income

Household Income Base	20,512
<\$15,000	7.2%
\$15,000 - \$24,999	7.5%
\$25,000 - \$34,999	4.7%
\$35,000 - \$49,999	14.0%
\$50,000 - \$74,999	19.5%
\$75,000 - \$99,999	14.9%
\$100,000 - \$149,999	18.0%
\$150,000 - \$199,999	8.6%
\$200,000+	5.6%
Average Household Income	\$87,956

2030 Households by Income

Household Income Base	23,378
<\$15,000	6.2%
\$15,000 - \$24,999	6.0%
\$25,000 - \$34,999	3.9%
\$35,000 - \$49,999	12.5%
\$50,000 - \$74,999	19.3%
\$75,000 - \$99,999	15.5%
\$100,000 - \$149,999	19.6%
\$150,000 - \$199,999	10.0%
\$200,000+	6.9%
Average Household Income	\$95,140

2025 Owner Occupied Housing Units by Value

Total	16,785
<\$50,000	11.9%
\$50,000 - \$99,999	12.8%
\$100,000 - \$149,999	13.4%
\$150,000 - \$199,999	8.2%
\$200,000 - \$249,999	15.4%
\$250,000 - \$299,999	9.8%
\$300,000 - \$399,999	13.7%
\$400,000 - \$499,999	4.6%
\$500,000 - \$749,999	7.4%
\$750,000 - \$999,999	1.4%
\$1,000,000 - \$1,499,999	0.3%
\$1,500,000 - \$1,999,999	0.2%
\$2,000,000 +	1.0%
Average Home Value	\$260,712

2030 Owner Occupied Housing Units by Value

Total	19,532
<\$50,000	11.2%
\$50,000 - \$99,999	6.7%
\$100,000 - \$149,999	8.0%
\$150,000 - \$199,999	6.1%
\$200,000 - \$249,999	14.9%
\$250,000 - \$299,999	10.5%
\$300,000 - \$399,999	18.4%
\$400,000 - \$499,999	6.9%
\$500,000 - \$749,999	13.0%
\$750,000 - \$999,999	2.4%
\$1,000,000 - \$1,499,999	0.5%
\$1,500,000 - \$1,999,999	0.2%
\$2,000,000 +	1.3%
Average Home Value	\$325,569

Data Note: Income represents the preceding year, expressed in current dollars. Household income includes wage and salary earnings, interest dividends, net rents, pensions, SSI and welfare payments, child support, and alimony.

Source: Esri forecasts for 2025 and 2030. U.S. Census Bureau 2000 and 2010 decennial Census data converted by Esri into 2020 geography.

July 10, 2025



Community Profile

2 ZIP Codes
 77327 (Cleveland) et al.
 Geography: ZIP Code

Prepared July 2025 by Lone Star College

TX(77327),TX(...

Median Household Income	
2025	\$70,728
2030	\$77,391
Median Home Value	
2025	\$212,209
2030	\$265,234
Per Capita Income	
2025	\$27,344
2030	\$29,353
Median Age	
2010	35.5
2020	34.3
2025	34.6
2030	35.5
2020 Population by Age	
Total	49,786
0 - 4	7.1%
5 - 9	8.3%
10 - 14	8.8%
15 - 24	13.8%
25 - 34	13.0%
35 - 44	13.0%
45 - 54	12.6%
55 - 64	11.3%
65 - 74	7.5%
75 - 84	3.6%
85 +	1.0%
18 +	70.9%
2025 Population by Age	
Total	66,088
0 - 4	7.0%
5 - 9	7.4%
10 - 14	8.0%
15 - 24	15.3%
25 - 34	12.8%
35 - 44	13.2%
45 - 54	12.2%
55 - 64	10.7%
65 - 74	8.3%
75 - 84	4.1%
85 +	1.0%
18 +	72.6%
2030 Population by Age	
Total	75,874
0 - 4	6.9%
5 - 9	6.8%
10 - 14	7.1%
15 - 24	14.7%
25 - 34	13.9%
35 - 44	12.8%
45 - 54	12.1%
55 - 64	10.7%
65 - 74	9.1%
75 - 84	4.6%
85 +	1.3%
18 +	74.8%

Source: Esri forecasts for 2025 and 2030. U.S. Census Bureau 2000 and 2010 decennial Census data converted by Esri into 2020 geography.

July 10, 2025



Community Profile

2 ZIP Codes
77327 (Cleveland) et al.
Geography: ZIP Code

Prepared July 2025 by Lone Star College

TX(77327),TX(...

2020 Population by Sex	
Males	25,280
Females	24,506
2025 Population by Sex	
Males	33,831
Females	32,257
2030 Population by Sex	
Males	38,580
Females	37,294
2010 Population by Race/Ethnicity	
Total	36,011
White Alone	81.6%
Black Alone	6.7%
American Indian Alone	0.7%
Asian Alone	0.5%
Pacific Islander Alone	0.0%
Some Other Race Alone	8.5%
Two or More Races	1.9%
Hispanic Origin	19.1%
Diversity Index	53.1
2020 Population by Race/Ethnicity	
Total	49,786
White Alone	57.7%
Black Alone	4.5%
American Indian Alone	1.5%
Asian Alone	0.4%
Pacific Islander Alone	0.0%
Some Other Race Alone	22.6%
Two or More Races	13.2%
Hispanic Origin	42.2%
Diversity Index	79.3
2025 Population by Race/Ethnicity	
Total	66,088
White Alone	49.7%
Black Alone	4.4%
American Indian Alone	1.6%
Asian Alone	0.6%
Pacific Islander Alone	0.0%
Some Other Race Alone	28.5%
Two or More Races	15.2%
Hispanic Origin	52.4%
Diversity Index	82.3
2030 Population by Race/Ethnicity	
Total	75,874
White Alone	46.8%
Black Alone	4.3%
American Indian Alone	1.6%
Asian Alone	0.6%
Pacific Islander Alone	0.0%
Some Other Race Alone	30.5%
Two or More Races	16.1%
Hispanic Origin	55.9%
Diversity Index	82.7

Data Note: Persons of Hispanic Origin may be of any race. The Diversity Index measures the probability that two people from the same area will be from different race/ethnic groups.

Source: Esri forecasts for 2025 and 2030. U.S. Census Bureau 2000 and 2010 decennial Census data converted by Esri into 2020 geography.

July 10, 2025



Community Profile

2 ZIP Codes
77327 (Cleveland) et al.
Geography: ZIP Code

Prepared July 2025 by Lone Star College

TX(77327),TX(...)

2020 Population by Relationship and Household Type

Total	49,786
In Households	98.7%
Householder	32.1%
Opposite-Sex Spouse	17.3%
Same-Sex Spouse	0.1%
Opposite-Sex Unmarried Partner	2.1%
Same-Sex Unmarried Partner	0.1%
Biological Child	31.7%
Adopted Child	0.7%
Stepchild	2.0%
Grandchild	4.0%
Brother or Sister	1.3%
Parent	1.4%
Parent-in-law	0.3%
Son-in-law or Daughter-in-law	1.1%
Other Relatives	2.1%
Foster Child	0.1%
Other Nonrelatives	2.4%
In Group Quarters	1.3%
Institutionalized	1.2%
Noninstitutionalized	0.0%

2025 Population 25+ by Educational Attainment

Total	41,184
Less than 9th Grade	10.5%
9th - 12th Grade, No Diploma	11.8%
High School Graduate	35.2%
GED/Alternative Credential	7.6%
Some College, No Degree	16.0%
Associate Degree	7.3%
Bachelor's Degree	7.7%
Graduate/Professional Degree	3.9%

2025 Population 15+ by Marital Status

Total	51,279
Never Married	30.1%
Married	56.6%
Widowed	4.9%
Divorced	8.4%

2025 Civilian Population 16+ in Labor Force

Civilian Population 16+	24,675
Population 16+ Employed	94.5%
Population 16+ Unemployment rate	5.5%
Population 16-24 Employed	15.5%
Population 16-24 Unemployment rate	8.5%
Population 25-54 Employed	66.5%
Population 25-54 Unemployment rate	4.8%
Population 55-64 Employed	13.2%
Population 55-64 Unemployment rate	5.1%
Population 65+ Employed	4.8%
Population 65+ Unemployment rate	5.9%

Source: Esri forecasts for 2025 and 2030. U.S. Census Bureau 2000 and 2010 decennial Census data converted by Esri into 2020 geography.

July 10, 2025



Community Profile

2 ZIP Codes
77327 (Cleveland) et al.
Geography: ZIP Code

Prepared July 2025 by Lone Star College

TX(77327),TX(...)

2025 Employed Population 16+ by Industry	
Total	23,315
Agriculture/Mining	1.9%
Construction	19.3%
Manufacturing	8.9%
Wholesale Trade	2.3%
Retail Trade	11.4%
Transportation/Utilities	11.2%
Information	0.7%
Finance/Insurance/Real Estate	4.3%
Services	34.8%
Public Administration	5.1%
2025 Employed Population 16+ by Occupation	
Total	23,315
White Collar	47.2%
Management/Business/Financial	11.4%
Professional	12.6%
Sales	10.3%
Administrative Support	12.9%
Services	13.7%
Blue Collar	39.1%
Farming/Forestry/Fishing	1.0%
Construction/Extraction	11.7%
Installation/Maintenance/Repair	5.8%
Production	6.4%
Transportation/Material Moving	14.2%
2020 Households by Type	
Total	15,891
Married Couple Households	54.2%
With Own Children <18	24.7%
Without Own Children <18	29.5%
Cohabiting Couple Households	6.9%
With Own Children <18	3.5%
Without Own Children <18	3.3%
Male Householder, No Spouse/Partner	16.9%
Living Alone	10.5%
65 Years and over	3.4%
With Own Children <18	2.2%
Without Own Children <18, With Relatives	3.3%
No Relatives Present	1.0%
Female Householder, No Spouse/Partner	22.0%
Living Alone	9.8%
65 Years and over	5.4%
With Own Children <18	5.5%
Without Own Children <18, With Relatives	6.0%
No Relatives Present	0.7%
2020 Households by Size	
Total	15,891
1 Person Household	20.3%
2 Person Household	28.0%
3 Person Household	16.5%
4 Person Household	15.5%
5 Person Household	10.7%
6 Person Household	5.5%
7 + Person Household	3.6%

Source: Esri forecasts for 2025 and 2030. U.S. Census Bureau 2000 and 2010 decennial Census data converted by Esri into 2020 geography.

July 10, 2025



Community Profile

2 ZIP Codes
77327 (Cleveland) et al.
Geography: ZIP Code

Prepared July 2025 by Lone Star College

TX(77327),TX(...)

2020 Households by Tenure and Mortgage Status

Total	15,891
Owner Occupied	79.6%
Owned with a Mortgage/Loan	42.8%
Owned Free and Clear	36.8%
Renter Occupied	20.4%

2025 Affordability, Mortgage and Wealth

Housing Affordability Index	110
Percent of Income for Mortgage	18.8%
Wealth Index	68

2020 Housing Units By Urban/ Rural Status

Total	18,109
Urban Housing Units	16.9%
Rural Housing Units	83.1%

2020 Population By Urban/ Rural Status

Total	49,786
Urban Population	15.0%
Rural Population	85.0%

Data Note: Households with children include any households with people under age 18, related or not. Multigenerational households are families with 3 or more parent-child relationships. Unmarried partner households are usually classified as nonfamily households unless there is another member of the household related to the householder. Multigenerational and unmarried partner households are reported only to the tract level. Esri estimated block group data, which is used to estimate polygons or non-standard geography.

Source: Esri forecasts for 2025 and 2030. U.S. Census Bureau 2000 and 2010 decennial Census data converted by Esri into 2020 geography.

July 10, 2025



Community Profile

2 ZIP Codes
 77327 (Cleveland) et al.
 Geography: ZIP Code

Prepared July 2025 by Lone Star College

TX(77327),TX(...)

Top 3 Tapestry Segments

1.	Shared Roots (G1)
2.	Southern Satellites (I6)
3.	Mobile Meadows (E4)

2025 Consumer Spending

Apparel & Services: Total \$	\$38,843,008
Average Spent	\$1,893.67
Spending Potential Index	77
Education: Total \$	\$22,293,296
Average Spent	\$1,086.84
Spending Potential Index	61
Entertainment/Recreation: Total \$	\$63,613,447
Average Spent	\$3,101.28
Spending Potential Index	75
Food at Home: Total \$	\$123,166,946
Average Spent	\$6,004.63
Spending Potential Index	81
Food Away from Home: Total \$	\$68,750,136
Average Spent	\$3,351.70
Spending Potential Index	81
Health Care: Total \$	\$129,247,067
Average Spent	\$6,301.05
Spending Potential Index	81
HH Furnishings & Equipment: Total \$	\$46,734,371
Average Spent	\$2,278.39
Spending Potential Index	78
Personal Care Products & Services: Total \$	\$16,878,546
Average Spent	\$822.86
Spending Potential Index	78
Shelter: Total \$	\$402,234,275
Average Spent	\$19,609.71
Spending Potential Index	74
Support Payments/Cash Contributions/Gifts in Kind: Total \$	\$56,749,850
Average Spent	\$2,766.67
Spending Potential Index	84
Travel: Total \$	\$51,085,895
Average Spent	\$2,490.54
Spending Potential Index	69
Vehicle Maintenance & Repairs: Total \$	\$22,730,783
Average Spent	\$1,108.17
Spending Potential Index	82

Data Note: Consumer spending shows the amount spent on a variety of goods and services by households that reside in the area. Expenditures are shown by broad budget categories that are not mutually exclusive. Consumer spending does not equal business revenue. Total and Average Amount Spent Per Household represent annual figures. The Spending Potential Index represents the amount spent in the area relative to a national average of 100.

Source: Consumer Spending data are derived from the 2022 and 2023 Consumer Expenditure Surveys, Bureau of Labor Statistics. Esri.

Source: Esri forecasts for 2025 and 2030. U.S. Census Bureau 2000 and 2010 decennial Census data converted by Esri into 2020 geography.

July 10, 2025



Demographic and Income Profile

2 ZIP Codes
77327 (Cleveland) et al.
Geography: ZIP Code

Prepared July 2025 by Lone Star College

Summary	Census 2010	Census 2020	2025	2030
Population	36,011	49,786	66,088	75,874
Households	12,424	15,891	20,512	23,378
Families	9,129	11,994	15,288	17,294
Average Household Size	2.85	3.09	3.19	3.22
Owner Occupied Housing Units	9,562	12,646	16,785	19,532
Renter Occupied Housing Units	2,862	3,245	3,727	3,846
Median Age	35.5	34.3	34.6	35.5

Trends: 2025-2030 Annual Rate	Area	State	National
Population	2.80%	1.10%	0.42%
Households	2.65%	1.41%	0.64%
Families	2.50%	1.31%	0.54%
Owner HHs	3.08%	1.80%	0.91%
Median Household Income	1.82%	2.27%	2.53%

Households by Income	2025		2030	
	Number	Percent	Number	Percent
<\$15,000	1,471	7.2%	1,457	6.2%
\$15,000 - \$24,999	1,532	7.5%	1,405	6.0%
\$25,000 - \$34,999	958	4.7%	918	3.9%
\$35,000 - \$49,999	2,877	14.0%	2,930	12.5%
\$50,000 - \$74,999	4,002	19.5%	4,519	19.3%
\$75,000 - \$99,999	3,065	14.9%	3,621	15.5%
\$100,000 - \$149,999	3,682	18.0%	4,574	19.6%
\$150,000 - \$199,999	1,768	8.6%	2,332	10.0%
\$200,000+	1,157	5.6%	1,622	6.9%
Median Household Income	\$70,728		\$77,391	
Average Household Income	\$87,956		\$95,140	
Per Capita Income	\$27,344		\$29,353	

Population by Age	Census 2010		Census 2020		2025		2030	
	Number	Percent	Number	Percent	Number	Percent	Number	Percent
0 - 4	2,724	7.6%	3,537	7.1%	4,626	7.0%	5,247	6.9%
5 - 9	2,769	7.7%	4,115	8.3%	4,916	7.4%	5,185	6.8%
10 - 14	2,783	7.7%	4,365	8.8%	5,267	8.0%	5,368	7.1%
15 - 19	2,722	7.6%	3,943	7.9%	5,368	8.1%	5,530	7.3%
20 - 24	2,197	6.1%	2,942	5.9%	4,727	7.2%	5,591	7.4%
25 - 34	4,557	12.7%	6,491	13.0%	8,489	12.8%	10,549	13.9%
35 - 44	4,616	12.8%	6,492	13.0%	8,701	13.2%	9,749	12.8%
45 - 54	5,226	14.5%	6,274	12.6%	8,059	12.2%	9,169	12.1%
55 - 64	4,184	11.6%	5,637	11.3%	7,062	10.7%	8,107	10.7%
65 - 74	2,521	7.0%	3,746	7.5%	5,496	8.3%	6,885	9.1%
75 - 84	1,318	3.7%	1,769	3.6%	2,688	4.1%	3,518	4.6%
85+	394	1.1%	475	1.0%	689	1.0%	976	1.3%

Race and Ethnicity	Census 2010		Census 2020		2025		2030	
	Number	Percent	Number	Percent	Number	Percent	Number	Percent
White Alone	29,389	81.6%	28,742	57.7%	32,847	49.7%	35,534	46.8%
Black Alone	2,430	6.7%	2,256	4.5%	2,887	4.4%	3,300	4.3%
American Indian Alone	241	0.7%	726	1.5%	1,071	1.6%	1,222	1.6%
Asian Alone	178	0.5%	222	0.4%	378	0.6%	468	0.6%
Pacific Islander Alone	7	0.0%	15	0.0%	23	0.0%	29	0.0%
Some Other Race Alone	3,077	8.5%	11,273	22.6%	18,818	28.5%	23,128	30.5%
Two or More Races	689	1.9%	6,552	13.2%	10,064	15.2%	12,193	16.1%
Hispanic Origin (Any Race)	6,877	19.1%	20,988	42.2%	34,648	52.4%	42,424	55.9%

Data Note: Income is expressed in current dollars.

Source: Esri forecasts for 2025 and 2030. U.S. Census Bureau 2020 decennial Census in 2020 geographies.

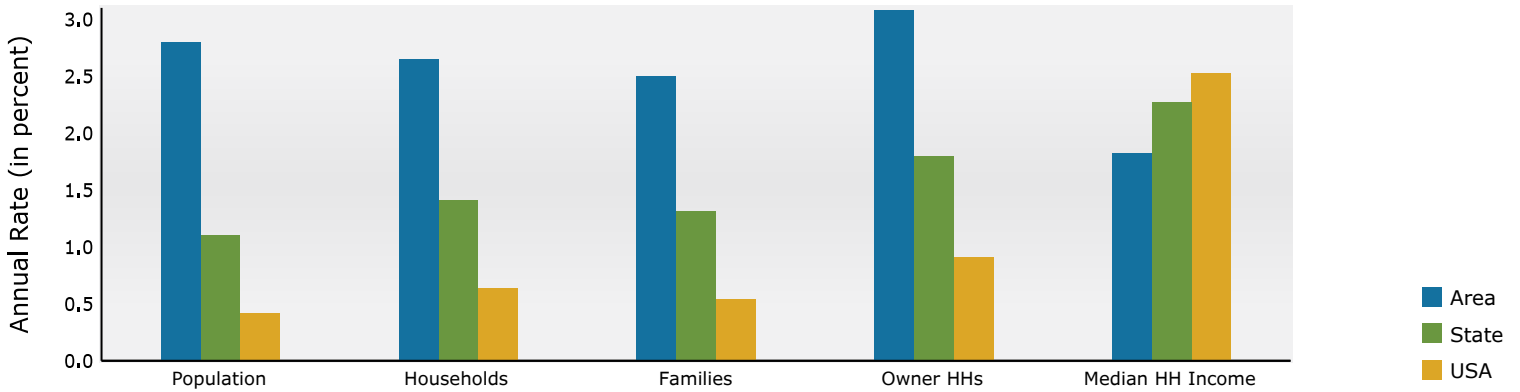


Demographic and Income Profile

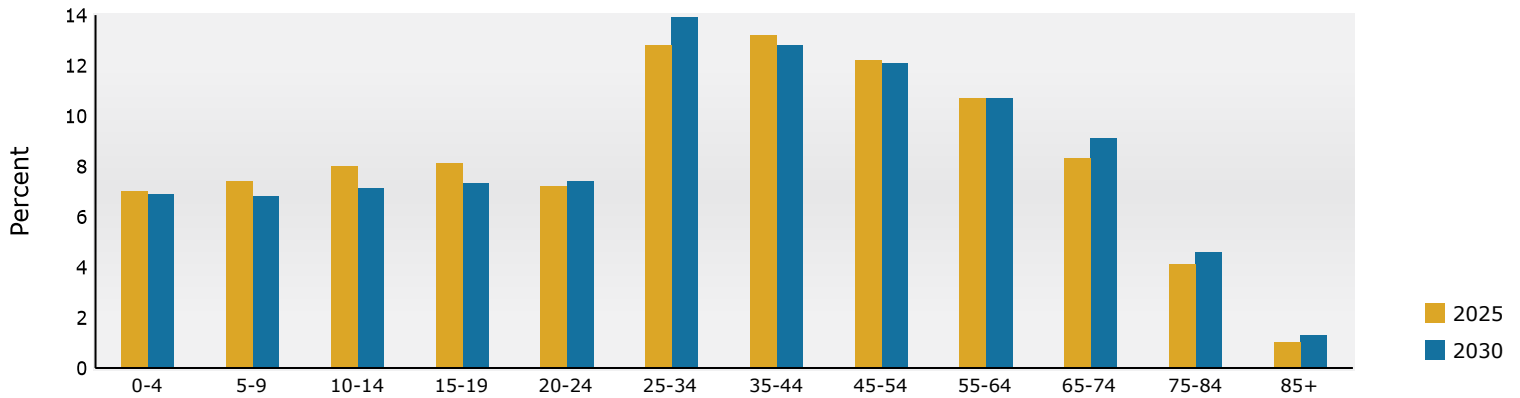
2 ZIP Codes
77327 (Cleveland) et al.
Geography: ZIP Code

Prepared July 2025 by Lone Star College

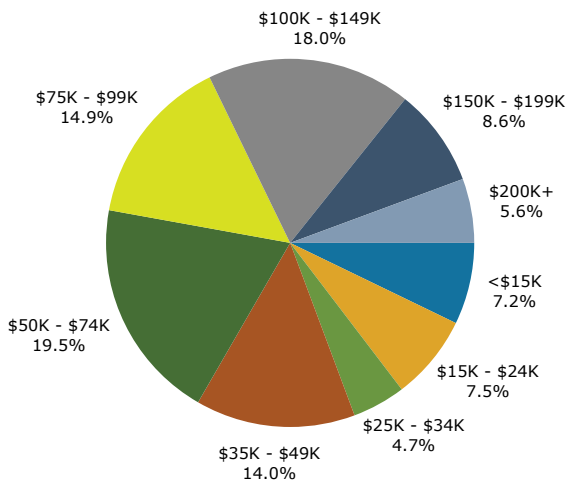
Trends 2025-2030



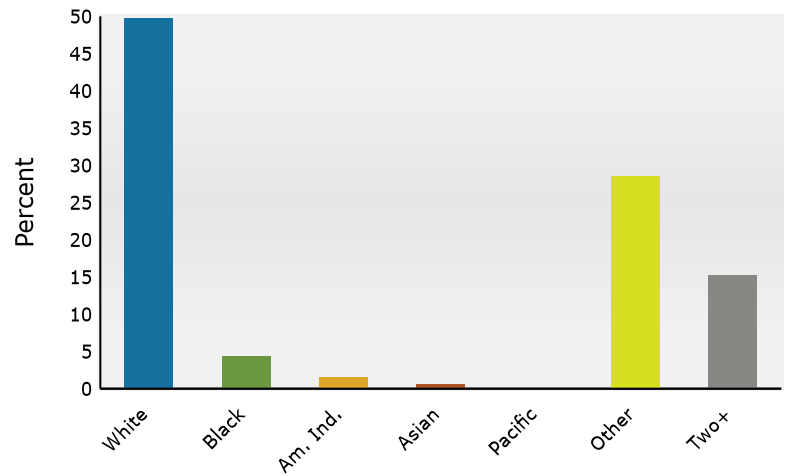
Population by Age



2025 Household Income



2025 Population by Race



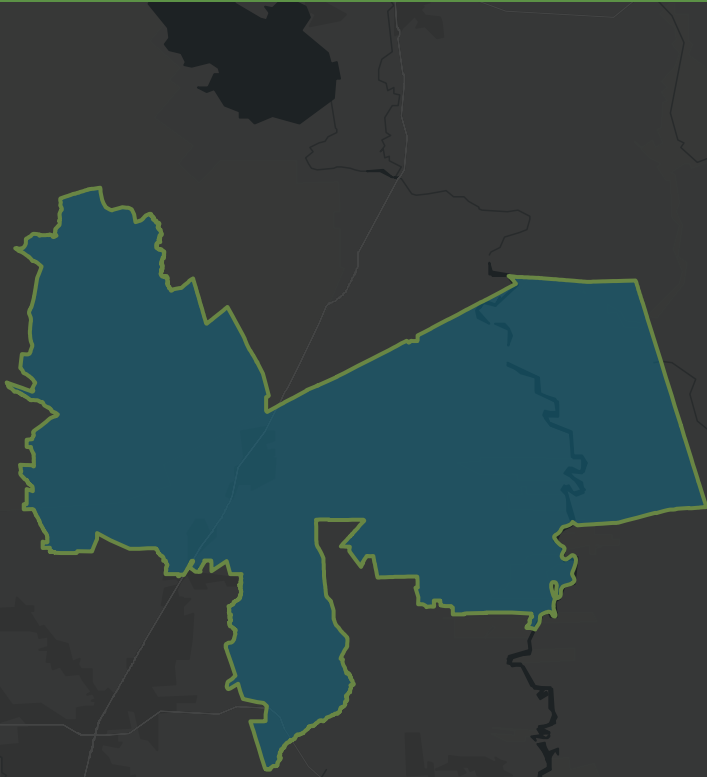
2025 Percent Hispanic Origin: 52.4%

Source: Esri forecasts for 2025 and 2030. U.S. Census Bureau 2020 decennial Census in 2020 geographies.

DEMOGRAPHIC PROFILE

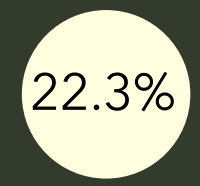
2 ZIP Codes

Geography: ZIP Code



Atascocita

EDUCATION



No High School Diploma



42.8%
High School Graduate



23.3%
Some College/
Associate's Degree



11.6%
Bachelor's/Grad/
Prof Degree

EMPLOYMENT



White Collar

47.2%



Blue Collar

39.1%



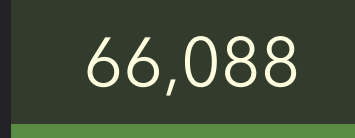
Services

13.7%



5.5%
Unemployment Rate

KEY FACTS



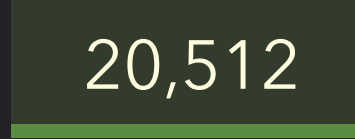
66,088

Population



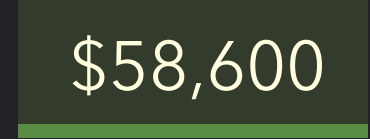
34.6

Median Age



20,512

Households



\$58,600

Median Disposable Income

INCOME



\$70,728

Median Household Income



\$27,344

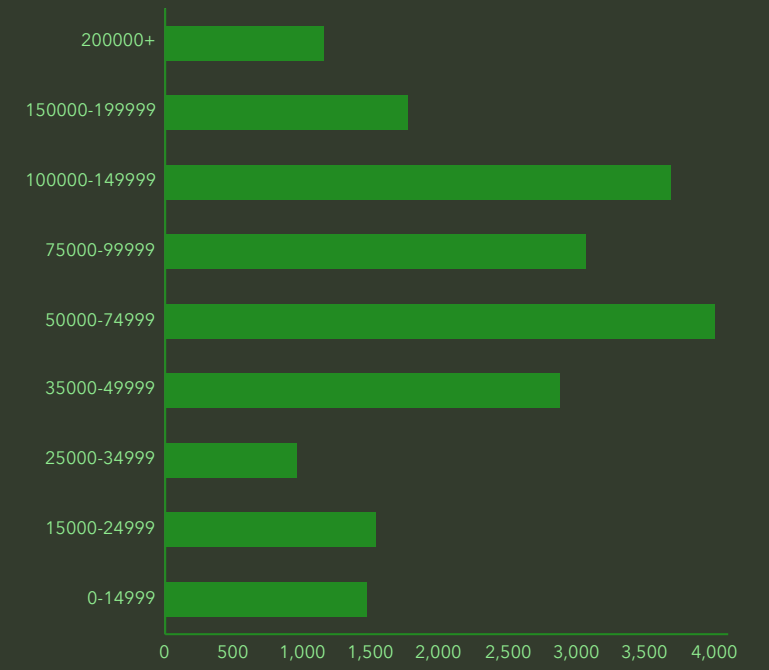
Per Capita Income



\$216,377

Median Net Worth

HOUSEHOLD INCOME (\$)



Source: This infographic contains data provided by Esri (2025, 2030).

© 2025 Esri